

# CITY OF LAFOLLETTE ADA TRANSITION PLAN

---



PRESENTED TO  
City of LaFollette  
Mike Stanfield, Mayor  
207 South Tennessee Avenue  
LaFollette, TN 37766

SUBMITTED BY  
Cannon & Cannon, Inc.  
8550 Kingston Pike  
Knoxville, TN 37919  
865.670.8555  
CCI # 01324-0001

September  
**2019**

---

--- Page Intentionally Left Blank ---

---

## ACKNOWLEDGEMENTS

Mayor: Mike Stanfield  
Vice Mayor: Lonnie Wilson

City Council:  
Bill Archer  
Ann Thompson  
Mark Hoskins

City Administrator: James Jeffries

Public Works Director: Jim Mullens

ADA Coordinator: Stan Foust

---

# TABLE OF CONTENTS

---

## TABLE OF CONTENTS

<b>Section 1: Executive Summary</b> .....	<b>1</b>
ADA Transition Plan.....	1
Purpose and Need.....	1
Summary of Findings.....	2
Implementation.....	2
<b>Section 2: Administrative Information</b> .....	<b>3</b>
ADA and Its Relationship to Other Laws.....	3
Requirements.....	3
The commitment by the City of LaFollette.....	3
Statement of Accessibility.....	4
ADA Capital Improvement plan.....	4
<b>SECTION 3: Self-evaluation</b> .....	<b>6</b>
Overview.....	6
Methodology.....	6
<b>SECTION 4: Administrative Review – Codes, Policies and Practices</b> .....	<b>8</b>
Overview.....	8
Codes, Policies, and Practices.....	8
Recommendations.....	8
Policy.....	9
<b>SECTION 5: Improvement Schedule</b> .....	<b>11</b>
Priority areas.....	11
External Agency Coordination.....	11
Schedule.....	11
Implementation Schedule.....	11
Methodology.....	11
<b>SECTION 6: Public Participation and Input</b> .....	<b>12</b>

ADA Coordinator.....	12
Grievance Procedure.....	12
<b>SECTION 7: Monitoring and Status Reporting .....</b>	<b>13</b>
<b>APPENDICES .....</b>	<b>14</b>
<b>Appendix A: Self-evaluation Results .....</b>	<b>15</b>
<b>Appendix B: Schedule / Budget Information .....</b>	<b>16</b>
Cost Information.....	16
Unit Prices .....	16
Entire Jurisdiction.....	17
<b>Appendix C: Public Outreach.....</b>	<b>18</b>
<b>Appendix D: Grievance Procedure .....</b>	<b>19</b>
<b>Appendix E: Contact Information.....</b>	<b>20</b>
<b>Appendix F: Agency ADA design standards and procedures .....</b>	<b>21</b>
Design Procedures.....	21
Design Standards.....	22
<b>Appendix G: Disability and impairment Concepts &amp; Definitions .....</b>	<b>23</b>
<b>Appendix H: Glossary of Terms .....</b>	<b>25</b>

## SECTION I: EXECUTIVE SUMMARY

### ADA TRANSITION PLAN

The City of LaFollette conducted an accessibility self-evaluation and an Americans with Disabilities Act (ADA) Transition plan. The object of this action is to assess the community's state of compliance with ADA regulations, to identify needs, and to develop a plan for the transition to compliance.

In November 2017, the City of LaFollette contracted Cannon & Cannon, Inc. to provide professional consultation in an effort to ensure that transitioning to compliance was effective and efficient. Cannon & Cannon, under the supervision of the City of LaFollette, cataloged and assessed a physical inventory of the existing infrastructure, developed a transition plan to meet compliance and verified that standards, codes, policies and procedures utilized for all future projects meet or exceed the legal requirements regarding accessibility.

This effort builds upon previous work toward ADA compliance. The City of LaFollette has made the initial steps in these efforts include naming an ADA Coordinator and developing a grievance program.

### PURPOSE AND NEED

The Americans with Disabilities Act (ADA), enacted on July 26, 1990, is a civil rights law prohibiting discrimination against individuals on the basis of disability. ADA consists of five titles outlining protections in the following areas: Employment, State and Local Services, Public Accommodations, Telecommunications, and Miscellaneous Provisions

Title II of ADA pertains to the programs, activities, and services public entities provide. As a provider of public services and programs, the City of LaFollette must comply with this section of the Act as it specifically applies to public service agencies. Title II of ADA provides that, "...no qualified individual with a disability shall, by reason of such disability, be excluded from participation in or be denied the benefits of the services, programs, or activities of a public entity, or be subjected to discrimination by any such entity." ([42 USC. Sec. 12132](#); [28 CFR. Sec. 35.130](#))

As required by Title II of [ADA, 28 CFR. Part 35 Sec. 35.105 and Sec. 35.150](#), the City of LaFollette has conducted a self-evaluation of its facilities within public rights of way and has developed this Transition Plan detailing how the organization will ensure that all of those facilities are accessible to all individuals.

### PUBLIC PARTICIPATION

The public should have access to the website for any concerns or complaints related to County Services, Programs, or Facilities. Currently, a link to the page is <http://www.lafolletetn.gov/departments/human-resources-department/ada-grievance-procedures>. It is recommended this link be located on the homepage.

This website page should have the following:

- ADA Public Notice
- ADA Grievance Procedure
- ADA Complaint Form
- ADA Applicant Accommodation Request Form

## **SUMMARY OF FINDINGS**

A self-evaluation was conducted for the City of LaFollette. This process examined administrative practices and facility compliance with ADA requirements. During the self-evaluation ADA deficiencies were discovered. We estimate approximately \$2,965,295 in current needs.

Administratively, the City of LaFollette has an ADA Coordinator and has developed a grievance policy. We did find the need for additional ADA references in ordinances, regulations, and polices.

## **IMPLEMENTATION**

The City of LaFollette has already begun the process of removing barriers for accessibility to facilities. Since 2007, the City of LaFollette has been implementing multiple ADA compliance projects at various locations including:

- Downtown business district street intersection curb ramps
- Sidewalks at LaFollette Middle School
- Various walking trails
- Sidewalks in the downtown district
- Renovation of the Electric Dept. building
- Restroom facilities and playground access at Dr. Lee J. Sergeant Park

## SECTION 2: ADMINISTRATIVE INFORMATION

### ADA AND ITS RELATIONSHIP TO OTHER LAWS

The City of LaFollette conducted an accessibility self-evaluation and an Americans with Disabilities Act (ADA) Transition plan. The object of this action is to assess the community's state of compliance with ADA regulations, to identify needs, and to develop a plan for the transition to compliance.

This effort builds upon previous work toward ADA compliance. The City of LaFollette has made the initial steps in these efforts including naming an ADA Coordinator and developing a grievance program.

### REQUIREMENTS

Under Title II, the City of LaFollette must meet these general requirements:

- Must operate their programs so that, when viewed in their entirety, the programs are accessible to and useable by individuals with disabilities [28 C.F.R. Sec. 35.150](#).
- May not refuse to allow a person with a disability to participate in a service, program or activity simply because the person has a disability [28 C.F.R. Sec. 35.130 \(a\)](#).
- Must make reasonable modifications in policies, practices and procedures that deny equal access to individuals with disabilities unless a fundamental alteration in the program would result [28 C.F.R. Sec. 35.130\(b\) \(7\)](#).
- May not provide services or benefits to individuals with disabilities through programs that are separate or different unless the separate or different measures are necessary to ensure that benefits and

services are equally effective [28 C.F.R. Sec. 35.130\(b\)\(iv\) & \(d\)](#).

- Must take appropriate steps to ensure that communications with applicants, participants and members of the public with disabilities are as effective as communications with others [29 C.F.R. Sec. 35.160\(a\)](#).
- Must designate at least one responsible employee to coordinate ADA compliance [28 CFR Sec. 35.107\(a\)](#). This person is often referred to as the "ADA Coordinator." The public entity must provide the ADA coordinator's name, office address, and telephone number to all interested individuals.
- Must provide notice of ADA requirements. All public entities, regardless of size, must provide information about the rights and protections of Title II to applicants, participants, beneficiaries, employees, and other interested persons [28 CFR Sec. 35.106](#). The notice must include the identification of the employee serving as the ADA coordinator and must provide this information on an ongoing basis [28 CFR Sec. 104.8\(a\)](#).
- Must establish a grievance procedure. Public entities must adopt and publish grievance procedures providing for prompt and equitable resolution of complaints [28 CFR Sec. 35.107\(b\)](#). This requirement provides for a timely resolution of all problems or conflicts related to ADA compliance before they escalate to litigation and/or the federal complaint process.

### THE COMMITMENT BY THE CITY OF LAFOLLETTE

In addressing the Purpose and Need of meeting accessibility needs and fulfilling the necessary requirements, the City of LaFollette



developed and is implementing an ADA Transition Plan that incorporates three primary focal points:

*1. Fiscal Responsibility*

The citizens of the City of LaFollette deserve the respect that all funds used in the development and implementation of the ADA transition plan will utilize the most ethical and cost-effective means to meet the plans goals.

*2. Full Accessibility*

The City of LaFollette’s citizens represent a diverse group of people with different strengths and different challenges. We recognize that the community’s diversity is both cherished and respected. And as such, it will be reflected in the plan’s outlined improvements to accessibility.

*3. “For the People” Mentality*

This Transition Plan is not designed to serve as a simple checklist to document compliance. It is a sincere effort to provide better “customer service” to the people by improving accessibility. During the transition and throughout future policies and approaches, the focus will remain on seeking ways to better serve our citizens.

**STATEMENT OF ACCESSIBILITY**

It is a practical impossibility to ensure that every service, program, or activity can provide full accessibility for every conceivable disability. However, the City of LaFollette is committed to making reasonable modifications in policies, practices, or procedures when it’s necessary to avoid discrimination on the basis of disability. However, some modifications are not feasible if it is demonstrated that by doing so it would fundamentally alter the nature of the service, program, or activity. The City of LaFollette will not place surcharges on individuals with

disabilities to cover the cost involved in making programs accessible.

**ADA CAPITAL IMPROVEMENT PLAN**

The ADA Capital Implementation Plan describes the extent to which the City operated projects are necessary to implement the ADA Transition Plan.

Types of projects included in the ADA Capital Implementation Plan can be categorized as follows:

- Resident-requested, missing, or non-compliant curb ramps.
- Parking, access and use of public buildings for citizens with disabilities.
- Curb ramp, sidewalk and other accessibility retrofits included with other facility projects.

The pace at which ADA corrections can occur is a function of available budget. The Public Works Department is responsible for the maintenance of City facilities and the maintenance and budgeting of roadway projects. The 2019 State Street Aid Fund budget is \$139,500, which is used for maintaining. With limited funding, it is imperative that a reasonable approach be taken to retrofit facility projects.

The removal of barriers is the highest priority of the ADA Compliance Program. Curb ramps should be installed at all locations where they are missing and necessary for the full usage of the overall pedestrian path of travel. Older non-conforming curb ramps that pose potential hazards to wheelchair users should be repaired, upgraded, or replaced. Some of these curb ramps may be ineffective or even dangerous due to steep slopes, narrow widths, and grade transitions.

The ADA Capital Implementation Plan includes a detailed and prioritized list of approximately 20 facility locations and items of work, which have been reviewed by the City. This implementation plan, which targets higher priority uses, anticipates a **50-year** implementation period to achieve compliance with program accessibility requirements. Additional ADA work, such as new construction and additional curb ramps beyond the minimum program access requirements, will continue beyond the timeframe identified above.

Each department maintains budgets for their facilities. Typically, facility expenditures are for operations and maintenance. Several facility related items were identified in the evaluation process. The implementation of ADA related improvements will need to be coordinated. For example, several locations may require like retrofits. It may be advantageous to have a single project to make retrofits for several locations. Furthermore, project should be funding based on the repair priority. With this said, there are some low cost, lower priority, requirements that may be accelerated.

## SECTION 3: SELF-EVALUATION

### OVERVIEW

The City of LaFollette is required, under Title II of the Americans with Disabilities Act (ADA) and 28CFR35.105, to perform a self-evaluation of its current transportation infrastructure policies, practices, and programs. This will identify how current policies and practices impact accessibility and assess whether or not any of them adversely affect reasonable accommodation of individuals with disabilities. In addition to the policy review, field compliance assessments were conducted along roadway and around and within facilities to document the state of compliancy.

A common problem in many jurisdictions is the lack of an unimpeded path of travel, or Pedestrian Access Route (PAR), that meets accessibility standards and goals. The self-evaluation examines this route and identifies potential PAR improvements. This includes primarily parking spaces, ramps, sidewalks, doorway access, service counters, signage, and restrooms. The Transition Plan will identify existing barriers to accessibility and any necessary mitigation or re-construction to provide a compliant PAR.

This Transition Plan is a dynamic document that incorporates that is updated on a regular basis charting progress until all accessibility barriers are removed. The Plan is designed to achieve the following:

- a) Identify barriers that limit the accessibility of public services
- b) Describe methods to make the services accessible
- c) Provide a prioritized schedule for modifications
- d) Identify the individuals who have been designated to oversee the implementation of the Transition Plan
- e) Remove complete ADA activities from pending projects.

It should be noted that accessibility is not only for individuals with needs related to mobility disabilities, but also for individuals with needs related to speech, cognitive, vision and hearing disabilities. There are many potential barriers to accessibility of City services.

### METHODOLOGY

As part of the assessment, two major components were evaluated, Administrative practices and public buildings/facilities. The methodology of assessment for each component is described below. Additionally, potential solutions were determined as well as programmatic budget numbers for the type of construction.

A prioritization system was developed to help prioritize ADA projects. Variables considered include existence of barriers, requests by citizens with disabilities, proximity to public buildings, and level of priority.

#### Administrative

As part of the self-evaluation, programs, policies, and standards were evaluated. The assessment included the review of these programs and documents for coverage of basic ADA requirements. Deficiencies were noted and suggested corrective actions were noted.

Even though all designs will implement the most up-to-date codes and standards, it is equally important that the construction of

these designs are constructed according to all applicable codes, ADA standards, and best practices, including PROWAG. Therefore, it is essential that for the success of an effective compliance program that construction activities will be monitored, documented, and reported in a detailed and consistent manner.

Right-of-ways

The City of LaFollette maintains approximately 13 miles of sidewalk including approximately 248 existing curb ramps. An evaluation ranking was determined using an algorithm that used ratings based on degree of barrier presented, feasibility of construction, proximity to public facilities, and importance to the Pedestrian Accessible Route.

Recommended corrections were then sorted into four priority categories, with Priority 1 representing the most urgent of needs.

Buildings and Facilities

A thorough evaluation was conducted for a multiple agency owned and/or used buildings and facilities. Each location was inspected based on the "ADA Checklist for Existing Facilities" produced by the Institute for Human Centered Design. The checklist was developed into a database and data collection took place in the field on table computers. Furthermore, the checklist was broken up into levels of priority including:

- Priority 1: Accessible approach and entrance
- Priority 2: Access to goods and services
- Priority 3: Access to public toilet rooms
- Priority 4: Access to other items such as water fountains and public telephones.

Field Assessment Summary

In the summer/fall of 2018, Cannon and Cannon, Inc. conducted an inventory and compliance assessment of public facilities maintained by the City of LaFollette consisting of the evaluation of the following 20 facilities:

- Dr. Lee J Sergeant Park
- East End Community Center
- Fire Station 1
- Fire Station 2
- Fire Station 3
- LaFollette Public Library
- Library
- Lonas Young Park
- Municipal Building
- Municipal Building and Library
- Municipal Services and City Hall
- Police Department
- Post Office (former)
- Public Works
- Recreation Center
- Skate Park/Liberty Park
- Valley View Head Start
- Veterans Association
- West End Community Center
- West LaFollette Head Start

A detailed evaluation of these facilities can be found in Appendix A. The list of projects will be updated periodically and will be updated with needed corrections.

## SECTION 4: ADMINISTRATIVE REVIEW – CODES, POLICIES AND PRACTICES

### OVERVIEW

Agency Codes, Policies, and Practices can have a significant impact on citizens with disabilities. As a result, these items have been reviewed as part of the ADA self-assessment. This section describes items reviewed, suggestions for improvement, and additional policy recommendations.

### CODES, POLICIES, AND PRACTICES

A review of Codes was conducted. A primary concern was the presence of an ADA Coordinator and the existence of an ADA Grievance Policy. The objective is to ensure that new or rehabilitated construction is ADA compliant. Additionally, documents such as Human Resources policies and Subdivision requirements. While Subdivisions with sidewalks in the City of LaFollette are non-existent, the subdivision regulations were reviewed for required ADA compliant infrastructure. Properly designed and inspected developments save the respective agency from inheriting liability for non-compliant construction.

Documents reviewed for the City of LaFollette include the following: City Employee Handbook, Subdivision Regulations, and Municipal Code.

### RECOMMENDATIONS

The following is a list of recommended actions for the respective agency to consider:

#### City of LaFollette Subdivision Regulations

1. Article III – General Requirements and Minimum Standards of Design, Section 18 – Sidewalks
  - a. Add reference to ADA Requirements. Suggest wording to the effect of “All Sidewalks and curb ramps shall be ADA compliant as described in the PROWAG.” Ideally basic PROWAG requirements would be discussed.
2. Article V – Enforcement and Penalties for Violation, Section B – Enforcement
  - a. Add wording to include the enforcement of ADA requirements
3. Article V - Enforcement and Penalties for Violation, Section C - Penalties
  - a. Add a fee structure for penalties for missing or non-compliant work related to ADA/PROWAG compliance.
4. Appendix V – Cement, Concrete Curbing, and Sidewalks
  - a. This section should be revised to reflect ADA standards. At a minimum, we suggest adding TDOT Standard Drawings for Sidewalk, Curbs, Ramps, and Drive Entrance.

#### City of LaFollette Municipal Code

1. Title 4 – Municipal Personnel
  - a. Add a chapter for the Americans with Disabilities Act Program to include a

- description of the program, statement of compliance with applicable ADA titles, program goals, requirement for an ADA Coordinator, and Reference to Grievance and Accommodation efforts.
- b. Review the Employee Handbook reference in Chapter 8 and remove discriminatory language
- 2. Title 12 – Building, Utility, ETC. Codes
  - a. Add a Chapter for ADA Code regarding buildings.
- 3. Title 16 – Streets, Sidewalks, ETC.
  - a. Add a Chapter for ADA/PROWAG Code regarding construction along roadway.

#### Disability Discrimination Policy and Grievance Procedure

This Policy and Procedure is currently found on the City's website, Human Resources Department link. It is recommended a link also be available on the homepage via an ADA link. See Appendix D.

#### City of LaFollette ADA Public Notice

It is recommended a public notice be located via an ADA link located on the homepage. See Appendix D for a sample notice.

#### City of LaFollette ADA Complaint Form

It is recommended a complaint form be located via an ADA link located on the homepage. See Appendix D for a sample form.

#### City of LaFollette Application Accommodation Request Form

This form is currently found on the City's website, Human Resources Department link. It is recommended a link also be available on the homepage via an ADA link

#### Infeasibility Evaluation Protocol

The City of LaFollette should develop a formal infeasibility evaluation protocol. The use of this protocol should be limited to project locations in which it is technically infeasible to comply with ADA regulations. The infeasibility designation should satisfy pre-determined criteria.

#### LaFollette's Website and General Communication

1. The City's website should address access by citizens with visual impairment.
2. The City should provide TDD services for citizens with hearing impairment.
3. The city should provide the ADA information for the general public that is easily accessed on the website The City should provide an ADA page link on the homepage. This ADA website page link should provide access to the Grievance Policy and other related forms and information. See Appendix D.

## **POLICY**

The City of LaFollette's goal is to continue to provide accessible pedestrian design features as part of the capital improvement project budgets. The agency has established ADA design standards and procedures as listed in Appendix F. These standards and procedures will be kept up to date with nationwide and local best management practices.

The agency will consider and respond to all accessibility improvement requests. All accessibility improvements that have been deemed reasonable will be scheduled consistent with transportation priorities. The agency will coordinate with external agencies to ensure that all new or altered pedestrian

## SECTION 4

### Administrative Review

facilities within the agency jurisdiction are ADA compliant to the maximum extent feasible.

Requests for accessibility improvements can be submitted to the ADA Coordinator for the City of LaFollette. Contact information for the ADA coordinator is located in Appendix E.

## SECTION 5: IMPROVEMENT SCHEDULE

### PRIORITY AREAS

The City of LaFollette has identified specific locations as priority areas for accessibility improvement projects. The priority for improvements is based on the following weighted factors:

- Existence of barriers – the location has a physical barrier for accessibility by citizens with disabilities
- Prioritization Level based on the Institute for Human Center Design ADA Checklist.
- Constructability – relative measure of the relative ability to construct improvements.
- Pedestrian Routes – project will improve accessibility along established pedestrian routes or locations frequently used by pedestrians.
- Public Input – Has improvements been requested by citizen/s with disabilities.

Right of Way and Facility improvements for the City of LaFollette are based on the priority ratings established with the ADA Self-Evaluation. Additionally, public input from citizens should also be a consideration in the prioritization and establishment of ADA projects.

### EXTERNAL AGENCY COORDINATION

Other agencies are responsible for pedestrian facilities within the jurisdiction of the City of LaFollette. The City will coordinate with those agencies to track and assist in the facilitation of the elimination of accessibility barriers along their routes

### PEDESTRIAN FACILITIES SCHEDULE

The City of LaFollette has set the following schedule goals for improving the accessibility of its pedestrian facilities within the City's jurisdiction:

- After 5 years, 95% of accessibility features that were constructed after January 26, 1991, would be ADA compliant.
- After 10 years, 80% of accessibility features within the priority areas identified by City staff would be ADA compliant.
- After 20 years, 80% of accessibility features within the jurisdiction of City would be ADA compliant.

### IMPLEMENTATION SCHEDULE

#### METHODOLOGY

The City of LaFollette will utilize the priority system developed by the Institute for Human Centered Design ADA Checklist for upgrading facilities to the current ADA standards. High priority projects will be incorporated into the Capital Improvement Program (CIP) on a case by case basis as determined by the City of LaFollette officials. The City's CIP, which includes a schedule and budget for specific improvements, will be approved by the City elected body. A listing to accessibility needs can be found in Appendix B.



**SECTION 6: PUBLIC PARTICIPATION AND INPUT****ADA COORDINATOR**

In accordance with 28 CFR 35.107(a), the City of LaFollette has identified an ADA Title II Coordinator to oversee the policies and procedures. Contact information for this individual is located in Appendix E.

Public Outreach efforts have included the following items:

1. Website ADA Grievance Procedures
2. Capital Project Public Meetings

The City of LaFollette recognizes that public participation is an important component in an effective ADA program. Input from the community will continue to be gathered to further help define priority areas for improvements within these jurisdictions.

This document will also be available for public comment. A summary of comments received and detailed information regarding the public outreach activities are located in Appendix C.

**GRIEVANCE PROCEDURE**

Under the Americans with Disabilities Act, each agency is required to publish its responsibilities in regards to the ADA. If users of the City of LaFollette's facilities, services, and programs believes the City has not provided reasonable accommodation, they have the right to file a grievance.

In accordance with 28 CFR 35.107(b), the City has developed a grievance procedure for the purpose of the prompt and equitable resolution of citizens' complaints, concerns, comments, and other grievances. It is further recommended that the following documents be included in the grievance procedure:

1. ADA Public Notice
2. ADA Grievance Procedure
3. ADA Complaint Form
4. ADA Application Accommodation Request Form

A sample of these documents and the grievance procedure is attached in Appendix D.

**SECTION 7: MONITORING AND STATUS REPORTING**

This document will continue to be updated as conditions within the City of LaFollette evolve. The appendices in this document will be updated periodically, while the main body of the document will be updated less frequently (within three to five years) with a future update schedule to be developed at that time. With each main body update, a public comment period will be established to continue the public outreach.

A tracking system for ADA improvements was developed. Staff should update the database as project locations receive corrective actions. By eliminating completed projects, the database will not assign corrective action to completed projects. Additionally, the City should update line item unit price estimates. We recommend the periodic data entry and cost estimate information is completed in ample time for the annual budget. Likewise, the database should be used with facility rehabilitation projects.

**APPENDICES**

- A. Self-Evaluation Summary Results
- B. Schedule / Budget Information
- C. Public Outreach
- D. Grievance Procedure
- E. Contact Information
- F. Agency ADA Design Standards and Procedures
- G. Glossary of Terms

## APPENDIX A: SELF-EVALUATION SUMMARY RESULTS

This initial self-evaluation of pedestrian facilities yielded the following results:

### Findings Summary

- 20 Facilities
  - Priority 1 – 52 Issues
  - Priority 2 – 18 Issues
  - Priority 3 – 44 Issues
  - Priority 4 – 4 Issues
  
- Right-of-Way Elements
  - Priority 1 – 138 Issues
  - Priority 2 – 114 Issues
  - Priority 3 – 139 Issues
  - Priority 4 – 92 Issues

# City of Lafollette

## Right-of-Way and Public Facility Compliance

Right of Way		Facilities	
1	\$ 459,500	1	\$ 184,575
2	\$ 364,000	2	\$ 30,725
3	\$ 1,133,665	3	\$ 61,375
4	\$ 728,980	4	\$ 2,475
\$ 2,686,145		\$ 279,150	

Total Estimated Construction Cost \$ 2,965,295

Number of Years in Transition Plan	50	10	15	20	25
Average Cost per Year	\$ 59,306	\$ 268,615	\$ 179,076	\$ 134,307	\$ 107,446
Total Cost of All Construction (Adjusted for Inflation)	\$ 6,689,520	\$ 3,079,364	\$ 3,330,625	\$ 3,608,886	\$ 3,917,395
Total of Additional Cost due to Inflation	\$ 3,724,225	\$ 393,219	\$ 644,480	\$ 922,741	\$ 1,231,250
% Increase due to Inflation	126%	15%	24%	34%	46%
Average Cost per Year (Adjusted for Inflation)	\$ 133,790	\$ 307,936	\$ 222,042	\$ 180,444	\$ 156,696
Approximate Number of Years to Complete Priority #1	10	3	4	5	6

121 Ramps Compliant  
 129 Ramps Non-Compliant / Missing  
 48% % Ramps Compliant

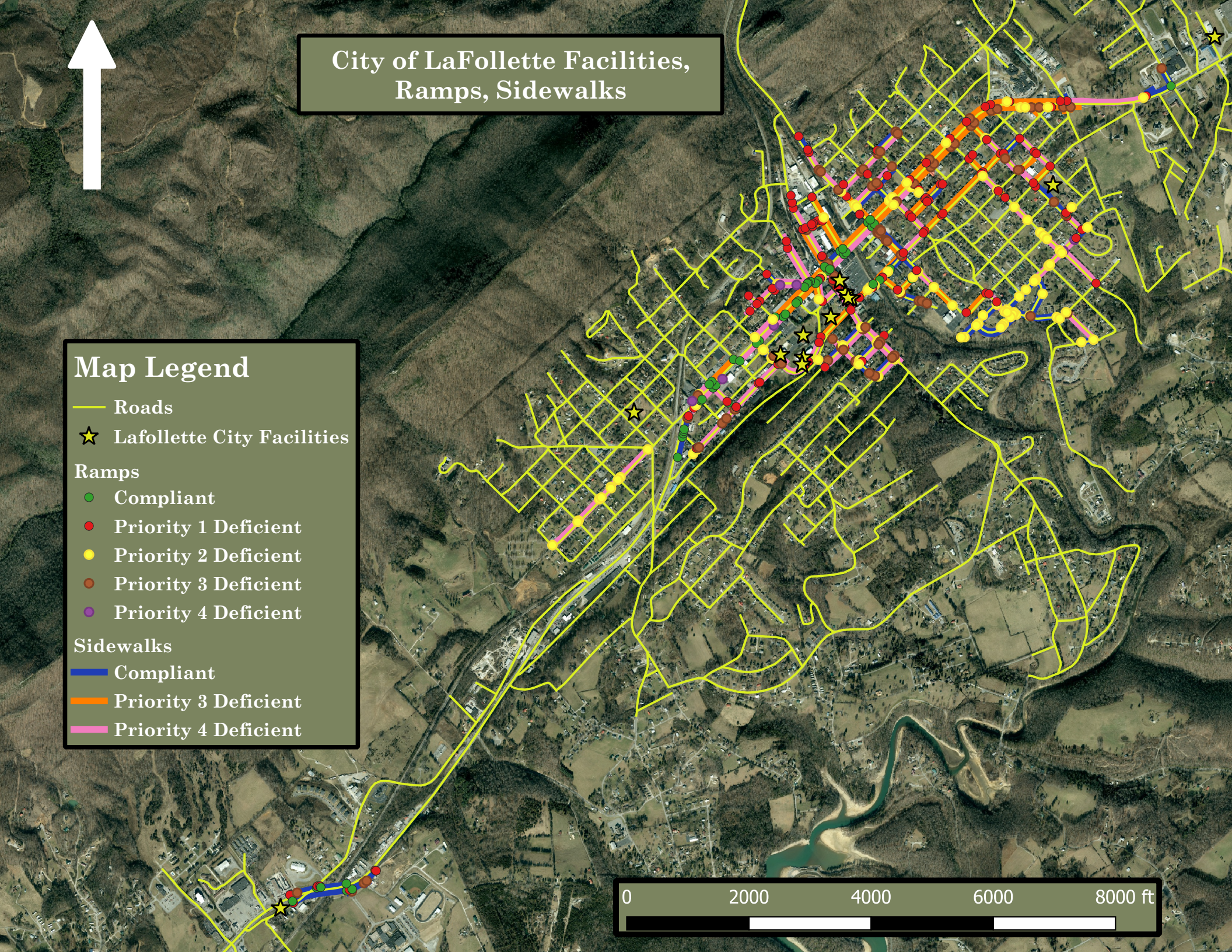
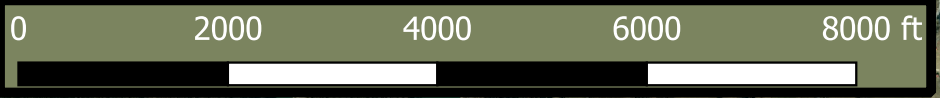
34133 LF Sidewalk Non-Compliant / Missing  
 53923 LF All Sidewalks  
 37% % Sidewalks Compliant

# City of LaFollette Facilities, Ramps, Sidewalks



## Map Legend

- Roads
- ★ LaFollette City Facilities
- Ramps**
  - Compliant
  - Priority 1 Deficient
  - Priority 2 Deficient
  - Priority 3 Deficient
  - Priority 4 Deficient
- Sidewalks**
  - Compliant
  - Priority 3 Deficient
  - Priority 4 Deficient



City of LaFollette Transition Plan - November 2018  
Right of Way Compliance Decision Matrix

Location							Severity						Correction Estimate									
ID	Segment / Building	From	To	Side	Type	Deficiency	Priority Factors (Scale 0 to 3)						Correction Estimate									
							Barrier	Citizen Request	Constructability	Proximity	Pedestrian Route	Evaluation Score	Corrective Action	Evaluation Ranking	Adjusted Ranking (Optional)	Qty	Unit	Misc Structural Cost	Misc Item	Correction Estimate	Selected	Assigned Priority
268	W Central	N 9th	Terminus	LT	Sidewalk	Faulting	0	3	3	3	12	Bevel Sidewalk Heaves	4		200	LF			\$ 1,000	x	4	\$ 1,000
270	W Central	N 13th	N 11th	LT	Sidewalk	Broken	1	2	3	3	14	Sidewalk Construction	3		150	LF			\$ 8,400	x	3	\$ 8,400
271	W Central	S 13th	S 11th	RT	Sidewalk	Broken	0	2	3	3	11	Sidewalk Construction	4		210	LF			\$ 11,760	x	4	\$ 11,760
272	S 13th	W Central	W Ash	RT	Sidewalk	Faulting	2	1	2	1	12	Sidewalk Construction	4		10	LF			\$ 560	x	4	\$ 560
273	S 13th	W Ash	W Beech	RT	Sidewalk	Faulting	2	1	2	1	12	Sidewalk Construction	4		10	LF			\$ 560	x	4	\$ 560
274	W Central	S 11th	S 9th	RT	Sidewalk	Cross Slope	0	1	3	3	10	Sidewalk Construction	4		425	LF			\$ 23,800	x	4	\$ 23,800
275	S 9th	W Central	W Beech	RT	Sidewalk	Non-Compliant	1	3	3	1	13	Entrance/Ramp Slope Modification	3		1	EA			\$ 2,500	x	3	\$ 2,500
278	W Beech	S 11th	S 9th	LT	Sidewalk	Non-Compliant	1	1	1	1	7	Entrance/Ramp Slope Modification	4		1	EA			\$ 2,500	x	4	\$ 2,500
279	W Beech	S 13th	S 11th	LT	Sidewalk	Non-Compliant	1	2	1	1	8	Entrance/Ramp Slope Modification	4		1	EA			\$ 2,500	x	4	\$ 2,500
280	W Beech	Rich	S 13th	LT	Sidewalk	Non-Compliant	1	1	1	1	7	Sidewalk Construction	4		140	LF			\$ 7,840	x	4	\$ 7,840
281	W Beech	S 17th	Rich	LT	Sidewalk	Non-Compliant	2	1	1	1	10	Entrance/Ramp Slope Modification	4		6	EA			\$ 15,000	x	4	\$ 15,000
283	W Central	N 21st	N 19th	LT	Sidewalk	Broken	1	3	2	2	12	Sidewalk Construction	4		150	LF			\$ 8,400	x	4	\$ 8,400
284	W Central	N 23rd	N 21st	LT	Sidewalk	Broken	1	3	2	2	12	Sidewalk Construction	4		100	LF			\$ 5,600	x	4	\$ 5,600
285	W Central	N 25th	N 23rd	LT	Sidewalk	Broken	1	3	2	2	12	Sidewalk Construction	4		120	LF			\$ 6,720	x	4	\$ 6,720
286	W Central	27th	N 25th	LT	Sidewalk	Broken	1	3	2	2	12	Sidewalk Construction	4		140	LF			\$ 7,840	x	4	\$ 7,840
291	W Chestnut	S 7th Terminus	S 5th	RT	Sidewalk	Broken	1	3	0	0	6	Sidewalk Construction	4		150	LF			\$ 8,400	x	4	\$ 8,400
292	S 5th	W Chestnut	W Elm	RT	Sidewalk	Broken	1	3	0	1	7	Sidewalk Construction	4		150	LF			\$ 8,400	x	4	\$ 8,400
293	S 5th	Terminus	W Chestnut	RT	Sidewalk	Broken	1	3	1	0	8	Sidewalk Construction	4		100	LF			\$ 5,600	x	4	\$ 5,600
295	W Chestnut	S 5th	S Tennessee	RT	Sidewalk	Broken	1	3	2	1	11	Sidewalk Construction	4		150	LF			\$ 8,400	x	4	\$ 8,400
296	S Tennessee	W Chestnut	W Elm	RT	Sidewalk	Faulting	0	3	2	2	9	Bevel Sidewalk Heaves	4		325	LF			\$ 1,625	x	4	\$ 1,625
298	W Elm	S 5th	S Tennessee	RT	Sidewalk	Broken	1	3	2	1	11	Sidewalk Construction	4		210	LF			\$ 11,760	x	4	\$ 11,760
299	S Tennessee	W Elm	W Fir	RT	Sidewalk	Faulting	0	3	2	2	9	Bevel Sidewalk Heaves	4		125	LF			\$ 1,625	x	4	\$ 1,625
300	S Tennessee	W Elm	W Fir	LT	Sidewalk	Faulting	0	3	2	2	9	Bevel Sidewalk Heaves	4		325	LF			\$ 1,625	x	4	\$ 1,625
302	S Tennessee	W Chestnut	W Elm	LT	Sidewalk	Faulting	0	3	2	2	9	Bevel Sidewalk Heaves	4		50	LF			\$ 250	x	4	\$ 250
303	W Central	N 7th	N 5th	LT	Sidewalk	Broken	2	1	3	3	16	Sidewalk Construction	3		300	LF			\$ 16,800	x	3	\$ 16,800
304	N 7th	W Walden	Mid Block	LT	Sidewalk	Broken	1	1	1	0	6	Sidewalk Construction	4		50	LF			\$ 2,800	x	4	\$ 2,800
305	W Walden	N 9th	N 7th	LT	Sidewalk	Broken	1	1	1	1	7	Sidewalk Construction	4		75	LF			\$ 4,200	x	4	\$ 4,200
306	N 5th	W Central	W Walden	LT	Sidewalk	Broken	1	2	1	1	8	Sidewalk Construction	4		150	LF	\$ 500	Bevel Sidewalk Heaves	\$ 8,900	x	4	\$ 8,900
309	N Nevada	W Central	Terminus	LT	Sidewalk	Broken	1	2	1	1	8	Sidewalk Construction	4		125	LF			\$ 7,000	x	4	\$ 7,000
310	N Nevada	W Central	Terminus	RT	Sidewalk	Broken	1	2	1	1	8	Sidewalk Construction	4		125	LF			\$ 7,000	x	4	\$ 7,000
311	W Central	Nevada	N Tennessee	LT	Sidewalk	Cross Slope	1	1	3	3	13	Sidewalk Construction	3		175	LF	\$ 750	Bevel Sidewalk Heaves	\$ 10,550	x	3	\$ 10,550
313	S Cumberland	E Beech	E Chestnut	RT	Sidewalk	Cross Slope	1	2	2	2	11	Entrance/Ramp Slope Modification	4		4	EA	\$ 1,000	Bevel Sidewalk Heaves	\$ 11,000	x	4	\$ 11,000
315	S Cumberland	E Elm	E Fir	RT	Sidewalk	Cross Slope	1	2	2	2	11	Entrance/Ramp Slope Modification	4		3	EA			\$ 7,500	x	4	\$ 7,500
317	S Cumberland	E Hemlock	E Kentucky	RT	Sidewalk	Cross Slope	1	2	2	2	11	Entrance/Ramp Slope Modification	4		3	EA			\$ 7,500	x	4	\$ 7,500
320	E Kentucky	Circle Drive	S 8th	RT	Sidewalk	Faulting	1	3	1	1	9	Bevel Sidewalk Heaves	4		30	LF			\$ 150	x	4	\$ 150
321	E Kentucky	S 8th	S Cumberland	RT	Sidewalk	Cross Slope	2	3	1	1	12	Cross-Slope Repair	4		20	LF	\$ 125	Bevel Sidewalk Heaves	\$ 6,625	x	4	\$ 6,625
323	E Kentucky	S Cumberland	Alexander	RT	Sidewalk	Faulting	1	3	1	1	9	Bevel Sidewalk Heaves	4		30	LF			\$ 150	x	4	\$ 150
324	S Cumberland	E Kentucky	E Virginia	LT	Sidewalk	Narrow Width	2	2	1	2	12	Obstruction Bypass	4		3	EA			\$ 30,000	x	4	\$ 30,000
326	S 6th	E Virginia	E Hill	RT	Sidewalk	Compliant	3	1	0	1	11	Obstruction Bypass	4		1	EA			\$ 10,000	x	4	\$ 10,000
330	E Prospect	N 6th	N 8th	RT	Sidewalk	Faulting	1	2	0	1	6	Bevel Sidewalk Heaves	4		410	LF			\$ 2,050	x	4	\$ 2,050
331	E Walden	N 4th	N 6th	LT	Sidewalk	Faulting	1	2	1	1	8	Bevel Sidewalk Heaves	4		380	LF	\$ 1,900	Bevel Sidewalk Heaves	\$ 3,800	x	4	\$ 3,800
338	N Indiana	E Forrest	550 N Indiana	RT	Sidewalk	Narrow Width	1	1	0	2	6	Sidewalk Construction	4	4	600	LF			\$ 33,600	x	4	\$ 33,600
339	N Tennessee	Aspen	Terminus	RT	Sidewalk	Broken	2	2	1	1	11	Sidewalk Construction	4		20	LF			\$ 1,120	x	4	\$ 1,120
340	N Tennessee	Mill	Aspen	RT	Sidewalk	Broken	2	2	1	1	11	Sidewalk Construction	4		80	LF	\$ 30,000	Obstruction Bypass (3x)	\$ 34,480	x	4	\$ 34,480
341	Mill	N Tennessee	N 1st	LT	Sidewalk	Broken	1	2	1	1	8	Sidewalk Construction	4		20	LF	\$ 20,000	Obstruction bypass (2x)	\$ 21,120	x	4	\$ 21,120
342	N Tennessee	W Central	Mill	LT	Sidewalk	Non-Compliant	3	2	1	1	14	Obstruction Bypass	3		14	EA			\$ 140,000	x	3	\$ 140,000
343	N Tennessee	E Central	Mill	LT	Sidewalk	Cross Slope	1	1	1	2	8	Sidewalk Construction	4		700	LF			\$ 39,200	x	4	\$ 39,200

City of LaFollette Transition Plan - November 2018  
Right of Way Compliance Decision Matrix

Location						Severity					Correction Estimate												
ID	Segment / Building	From	To	Side	Type	Deficiency	Priority Factors (Scale 0 to 3)					Correction Estimate											
							Barrier	Citizen Request	Constructability	Proximity	Pedestrian Route	Evaluation Score	Corrective Action	Evaluation Ranking	Adjusted Ranking (Optional)	Qty	Unit	Misc Structural Cost	Misc Item	Correction Estimate	Selected	Assigned Priority	Selected Total
344	Mill	N Tennessee	N 1st	RT	Sidewalk	Non-Compliant	3		2	1	1	14	Obstruction Bypass	3		1	EA			\$ 10,000	x	3	\$ 10,000
345	N 1st	W Central	Mill	LT	Sidewalk	Broken	3		2	2	1	16	Sidewalk Construction	3		220	LF	\$ 30,000	Obstruction bypass (3x)	\$ 42,320	x	3	\$ 42,320
349	E Central	S 16th	S Massachusetts	RT	Sidewalk	Cross Slope	1		2	3	3	14	Sidewalk Construction	3		550	LF			\$ 30,800	x	3	\$ 30,800
350	E Central	N Massachusetts	Foot Hills	LT	Sidewalk	Non-Compliant	0		3	3	3	12	Detectable Warnings	4		20	SF			\$ 800	x	4	\$ 800
353	E Central	Terminus	N Massachusetts	LT	Sidewalk	Narrow Width	1		1	3	3	13	Sidewalk Widening	3		850	LF	\$ 4,250	Bevel Sidewalk Heaves	\$ 33,150	x	3	\$ 33,150
354	E Central	North	Terminus	LT	Sidewalk	Narrow Width	1		1	3	3	13	Sidewalk Widening	3		270	LF	\$ 1,350	Bevel Sidewalk Heaves	\$ 10,530	x	3	\$ 10,530
355	E Central	N 12th	North	LT	Sidewalk	Narrow Width	1		1	3	3	13	Sidewalk Widening	3		330	LF	\$ 1,650	Bevel Sidewalk Heaves	\$ 12,870	x	3	\$ 12,870
357	E Central	N Cumberland	N12th	LT	Sidewalk	Narrow Width	1		1	3	3	13	Sidewalk Widening	3		400	LF	\$ 2,000	Bevel Sidewalk Heaves	\$ 15,600	x	3	\$ 15,600
360	S 12th	E Beech	E Chestnut	RT	Sidewalk	Non-Compliant	2		2	1	1	11	Entrance/Ramp Slope Modification	4		4	EA	\$ 1,250	Bevel Sidewalk Heaves	\$ 11,250	x	4	\$ 11,250
361	S 14th	E Chestnut	E Elm	RT	Sidewalk	Non-Compliant	2		2	1	1	11	Entrance/Ramp Slope Modification	4		1	EA			\$ 2,500	x	4	\$ 2,500
363	S 14th	E Beech	E Chestnut	RT	Sidewalk	Broken	1		3	1	1	9	Sidewalk Construction	4		10	LF	\$ 5,000	Entrance/Ramp Slope Modification (2x)	\$ 5,560	x	4	\$ 5,560
366	N Indiana	E Prospect	E Forrest	RT	Sidewalk	Narrow Width	3		0	0	2	11	Sidewalk Widening	4		350	LF			\$ 11,900	x	4	\$ 11,900
367	E Prospect	N 4th	N 6th	RT	Sidewalk	Broken	1		2	0	1	6	Sidewalk Construction	4		125	LF			\$ 7,000	x	4	\$ 7,000
369	E Prospect	N Indiana	N 4th	RT	Sidewalk	Broken	1		2	0	1	6	Sidewalk Construction	4		100	LF			\$ 5,600	x	4	\$ 5,600
370	E Walden	N Indiana	N 4th	LT	Sidewalk	Faulting	1		2	1	1	8	Bevel Sidewalk Heaves	4		450	LF	\$ 2,250	Bevel Sidewalk Heaves	\$ 4,500	x	4	\$ 4,500
371	N Indiana	E Walden	E Prospect	RT	Sidewalk	Narrow Width	3		0	1	2	13	Sidewalk Widening	3		400	LF			\$ 13,600	x	3	\$ 13,600
374	N 1st	W Central	Aspen	RT	Sidewalk	Non-Compliant	3		2	1	1	14	Obstruction Bypass	3		4	EA			\$ 40,000	x	3	\$ 40,000
376	W Central	N 1st	N Indiana	LT	Sidewalk	Cross Slope	2		1	3	3	16	Sidewalk Construction	3		650	LF			\$ 36,400	x	3	\$ 36,400
380	E Central	N Indiana	N 4th	LT	Sidewalk	Narrow Width	1		1	3	3	13	Sidewalk Widening	3		445	LF	\$ 2,225	Bevel Sidewalk Heaves	\$ 17,355	x	3	\$ 17,355
381	N Indiana	E Central	E Walden	RT	Sidewalk	Narrow Width	3		0	2	2	15	Sidewalk Widening	3		350	LF			\$ 11,900	x	3	\$ 11,900
382	S 4th	E Central	E Ash	LT	Sidewalk	Narrow Width	2		1	2	1	12	Sidewalk Widening	4		275	LF			\$ 9,350	x	4	\$ 9,350
384	E Central	S Indiana	S 4th	RT	Sidewalk	Broken	2		2	3	3	17	Sidewalk Construction	3		150	LF	\$ 10,000	Entrance/Ramp Slope Modification(4x)	\$ 18,400	x	3	\$ 18,400
386	E Ash	S 4th	S 6th	RT	Sidewalk	Faulting	2		3	2	1	14	Bevel Sidewalk Heaves	3		360	LF			\$ 1,800	x	3	\$ 1,800
387	S 4th	E Ash	E Beech	LT	Sidewalk	Narrow Width	2		1	1	1	10	Sidewalk Construction	4		305	LF			\$ 17,080	x	4	\$ 17,080
388	E Ash	S 6th	Terminus	LT	Sidewalk	Broken	2		2	2	1	13	Sidewalk Construction	3		60	LF	\$ 100	Bevel Sidewalk Heaves	\$ 3,460	x	3	\$ 3,460
389	E Ash	S 4th	S 6th	LT	Sidewalk	Broken	2		3	2	1	14	Sidewalk Construction	3		60	LF	\$ 500	Bevel Sidewalk Heaves	\$ 3,860	x	3	\$ 3,860
391	E Central	S 6th	S 8th	RT	Sidewalk	Cross Slope	1		1	3	3	13	Sidewalk Construction	3		250	LF	\$ 2,500	Entrance/Ramp Slope Modification	\$ 16,500	x	3	\$ 16,500
392	S 6th	E Central	E Ash	LT	Sidewalk	Non-Compliant	2		2	2	1	13	Entrance/Ramp Slope Modification	3		1	EA			\$ 2,500	x	3	\$ 2,500
395	E Central	S 4th	S 6th	RT	Sidewalk	Non-Compliant	0		2	3	3	11	Bevel Sidewalk Heaves	4		350	LF	\$ 5,000	Entrance/Ramp Slope Modification(2x)	\$ 6,750	x	4	\$ 6,750
396	E Central	N 4th	N 6th	LT	Sidewalk	Narrow Width	1		1	3	3	13	Sidewalk Widening	3		355	LF	\$ 1,775	Bevel Sidewalk Heaves	\$ 13,845	x	3	\$ 13,845
399	E Central	N 6th	N 8th	LT	Sidewalk	Narrow Width	1		1	3	3	13	Sidewalk Widening	3		415	LF	\$ 2,075	Bevel Sidewalk Heaves	\$ 16,185	x	3	\$ 16,185
400	E Central	N 8th	N Cumberland	LT	Sidewalk	Narrow Width	1		1	3	3	13	Sidewalk Widening	3		410	LF	\$ 2,050	Bevel Sidewalk Heaves	\$ 15,990	x	3	\$ 15,990
402	E Central	S 8th	S Cumberland	RT	Sidewalk	Narrow Width	1		1	3	3	13	Sidewalk Widening	3		450	LF			\$ 15,300	x	3	\$ 15,300
405	S Cumberland	E Ash	E Beech	LT	Sidewalk	Non-Compliant	2		1	2	2	13	Obstruction Bypass	3		1	EA			\$ 10,000	x	3	\$ 10,000
407	E Central	S Cumberland	S 12th	RT	Sidewalk	Narrow Width	1		1	3	3	13	Sidewalk Widening	3		450	LF	\$ 7,500	Entrance/Ramp Slope Modification	\$ 22,800	x	3	\$ 22,800
408	S 12th	E Central	E Ash	RT	Sidewalk	Faulting	2		2	2	1	13	Bevel Sidewalk Heaves	3		300	LF			\$ 1,500	x	3	\$ 1,500
409	S 12th	E Ash	E Beech	RT	Sidewalk	Non-Compliant	2		2	1	1	11	Entrance/Ramp Slope Modification	4		1	EA	\$ 1,475	Bevel Sidewalk Heaves	\$ 3,975	x	4	\$ 3,975
410	E Beech	S Cumberland	S 12th	LT	Sidewalk	Faulting	2		3	2	1	14	Sidewalk Construction	3		40	LF			\$ 2,240	x	3	\$ 2,240
411	E Beech	S 4th	S Cumberland	LT	Sidewalk	Narrow Width	2		3	2	1	14	Sidewalk Widening	3		110	LF	\$ 250	Bevel Sidewalk Heaves	\$ 3,990	x	3	\$ 3,990
412	E Beech	S Indiana	S 4th	LT	Sidewalk	Broken	1		3	2	1	11	Sidewalk Construction	4		20	LF	\$ 125	Bevel Sidewalk Heaves	\$ 1,245	x	4	\$ 1,245
415	S Indiana	E Central	E Beech	LT	Sidewalk	Cross Slope	1		2	3	2	13	Sidewalk Construction	3		1075	LF	\$ 2,500	Entrance/Ramp Slope Modification	\$ 62,700	x	3	\$ 62,700
418	W Central	S Tennessee	Bridge	RT	Sidewalk	Cross Slope	0		1	3	3	10	Sidewalk Construction	4		125	LF			\$ 7,000	x	4	\$ 7,000
421	Depot	W Central	Terminus	LT	Sidewalk	Broken	1		2	2	1	10	Sidewalk Construction	4		50	LF	\$ 5,000	Entrance/Ramp Slope Modification	\$ 7,800	x	4	\$ 7,800
422	W Central	Depot	S Tennessee	RT	Sidewalk	Cross Slope	1		1	3	3	13	Sidewalk Construction	3		250	LF			\$ 14,000	x	3	\$ 14,000
423	S Tennessee	W Central	W Beech	RT	Sidewalk	Cross Slope	1		1	3	2	12	Sidewalk Construction	4		375	LF			\$ 21,000	x	4	\$ 21,000
424	W Beech	S Tennessee	S 5th	RT	Sidewalk	Broken	2		2	3	1	15	Sidewalk Construction	3		70	LF			\$ 3,920	x	3	\$ 3,920
1000	W Central	S 9th	S 7th	RT	Sidewalk	Broken	0		0	3	3	9	Sidewalk Construction	4		185	LF	\$ 750	Bevel Sidewalk Heaves	\$ 11,110	x	4	\$ 11,110



City of LaFollette Transition Plan - November 2018  
Right of Way Compliance Decision Matrix

Location							Severity					Correction Estimate										
ID	Segment / Building	From	To	Side	Type	Deficiency	Priority Factors (Scale 0 to 3)					Corrective Action	Evaluation Ranking	Adjusted Ranking (Optional)	Qty	Unit	Misc Structural Cost	Misc Item	Correction Estimate	Selected	Assigned Priority	Selected Total
							Barrier	Citizen Request	Constructability	Proximity	Pedestrian Route											
1001	W Central	S 7th	S 5th	RT	Sidewalk	Cross Slope	1	1	3	3	13	Sidewalk Construction	3		325	LF		\$ 18,200	x	3	\$ 18,200	
1002	W Central	S 5th	Depot	RT	Sidewalk	Cross Slope	1	1	3	3	13	Sidewalk Construction	3		450	LF		\$ 25,200	x	3	\$ 25,200	
1003	E Central	S 12th	S 14th	RT	Sidewalk	Cross Slope	1	2	3	3	14	Sidewalk Construction	3		175	LF		\$ 9,800	x	3	\$ 9,800	
1004	E Central	S 14th	Terminus	RT	Sidewalk	Cross Slope	1	2	3	3	14	Sidewalk Construction	3		450	LF		\$ 25,200	x	3	\$ 25,200	
1005	E Central	Terminus	S 16th	RT	Sidewalk	Cross Slope	1	2	3	3	14	Sidewalk Construction	3		300	LF		\$ 16,800	x	3	\$ 16,800	
1006	E Central	S Massachusetts	Terminus	RT	Sidewalk	Cross Slope	1	2	3	3	14	Sidewalk Construction	3		200	LF		\$ 11,200	x	3	\$ 11,200	
1011	E Chestnut	S 12th	S 14th	RT	Sidewalk	Faulting	1	3	3	1	13	Bevel Sidewalk Heaves	3		20	LF		\$ 100	x	3	\$ 100	
1013	S 12th	E Hemlock	E Kentucky	LT	Sidewalk	Faulting	2	3	1	1	12	Sidewalk Construction	4		40	LF		\$ 2,240	x	4	\$ 2,240	
1017	S 4th	Sharp	E Kentucky	RT	Sidewalk	Faulting	1	2	0	1	6	Bevel Sidewalk Heaves	4		30	LF		\$ 150	x	4	\$ 150	
1025	S Indiana	E Beech	E Chestnut	RT	Sidewalk	Cross Slope	0	1	2	2	7	Entrance/Ramp Slope Modification	4		2	EA		\$ 5,000	x	4	\$ 5,000	
1028	E Chestnut	River Dr	S Indiana	RT	Sidewalk	Non-Compliant	2	2	2	1	13	Entrance/Ramp Slope Modification	3		3	EA		\$ 7,500	x	3	\$ 7,500	
1029	E Beech	River Dr	S Indiana	RT	Sidewalk	Cross Slope	1	1	2	1	9	Sidewalk Construction	4		700	LF		\$ 39,200	x	4	\$ 39,200	
1031	S Tennessee	W Beech	W Chestnut	RT	Sidewalk	Running Slope	1	0	2	2	9	Running-Slope Modification	4		2	EA	\$ 1,750	Bevel Sidewalk Heaves	\$ 41,750	x	4	\$ 41,750
1032	Depot	W Central	S 5th	RT	Sidewalk	Broken	2	3	2	1	14	Sidewalk Construction	3		50	LF		\$ 2,800	x	3	\$ 2,800	
1033	W Fir	S 5th	S Tennessee	RT	Sidewalk	Broken	1	3	2	1	11	Sidewalk Construction	4		210	LF		\$ 11,760	x	4	\$ 11,760	
1034	W Central	Rich	S 13th	RT	Sidewalk	Faulting	0	3	3	3	12	Bevel Sidewalk Heaves	4		275	LF		\$ 1,375	x	4	\$ 1,375	
1035	W Central	Railroad	Terminus	LT	Sidewalk	Faulting	0	2	3	3	11	Bevel Sidewalk Heaves	4		75	LF		\$ 375	x	4	\$ 375	
1036	W Central	Terminus	N 13th	LT	Sidewalk	Faulting	0	2	3	3	11	Bevel Sidewalk Heaves	4		125	LF		\$ 625	x	4	\$ 625	
1037	Jacksboro Pike	S 17th	Rich	RT	Sidewalk	Non-Compliant	0	2	3	3	11	Bevel Sidewalk Heaves	4		175	LF		\$ 875	x	4	\$ 875	
1042	W Beech	S 5th	S 9th	RT	Sidewalk	Cross Slope	1	1	3	1	11	Sidewalk Construction	4		400	LF		\$ 22,400	x	4	\$ 22,400	
1044	W Walden	N 7th	N 5th	LT	Sidewalk	Broken	1	1	1	1	7	Sidewalk Construction	4		225	LF		\$ 12,600	x	4	\$ 12,600	
1045	W Walden	N 7th	N 5th	RT	Sidewalk	Broken	1	1	1	1	7	Sidewalk Construction	4		225	LF		\$ 12,600	x	4	\$ 12,600	
1046	E Hemlock	S Indiana	S 4th	RT	Sidewalk	Narrow Width	3	3	2	1	17	Sidewalk Construction	3		500	LF		\$ 28,000	x	3	\$ 28,000	
1047	N 5th	W Central	W Walden	RT	Sidewalk	Cross Slope	1	2	1	1	8	Sidewalk Construction	4		75	LF	\$ 11,200	Broken	\$ 15,400	x	4	\$ 15,400
1050	E Elm	S 12th	S 14th	LT	Sidewalk	Faulting	2	3	3	1	16	Bevel Sidewalk Heaves	3		20	LF		\$ 100	x	3	\$ 100	
1051	S 12th	E Chestnut	E Elm	LT	Sidewalk	Faulting	2	3	1	1	12	Bevel Sidewalk Heaves	4		50	LF		\$ 250	x	4	\$ 250	
2001	S Tennessee				Ramp	Non-Compliant	2	2	3	3	23	Ramp Construction	1		1	EA		\$ 3,000	x	1	\$ 3,000	
2002	S Tennessee				Ramp	Non-Compliant	2	2	3	3	23	Ramp Construction	1		1	EA		\$ 3,000	x	1	\$ 3,000	
2003	S Tennessee				Ramp	Non-Compliant	3	2	3	3	29	Ramp Construction	1		1	EA		\$ 3,000	x	1	\$ 3,000	
2004	S Tennessee				Ramp	Non-Compliant	2	2	3	3	23	Ramp Construction	1		1	EA		\$ 3,000	x	1	\$ 3,000	
2005	S Tennessee				Ramp	Non-Compliant	1	2	3	3	17	Ramp Construction	3		1	EA		\$ 3,000	x	3	\$ 3,000	
2006	S Tennessee				Ramp	Non-Compliant	2	2	3	3	23	Ramp Construction	1		1	EA		\$ 3,000	x	1	\$ 3,000	
2007	S Tennessee				Ramp	Non-Compliant	1	2	3	3	17	Ramp Construction	3		1	EA		\$ 3,000	x	3	\$ 3,000	
2009	W Central	N 9th	N 7th	LT	Ramp	Non-Compliant	1	3	3	3	18	Ramp Construction	2		1	EA		\$ 3,000	x	2	\$ 3,000	
2010	E Central				Ramp	Non-Compliant	1	2	2	3	15	Ramp Construction	3		1	EA		\$ 4,000	x	3	\$ 4,000	
2010	S Tennessee				Ramp	Non-Compliant	1	1	2	3	14	Ramp Construction	3		1	EA		\$ 3,000	x	3	\$ 3,000	
2011	S Tennessee				Ramp	Non-Compliant	1	1	2	3	14	Ramp Construction	3		1	EA		\$ 3,000	x	3	\$ 3,000	
2013	S Tennessee				Ramp	Non-Compliant	1	1	2	3	14	Ramp Construction	3		1	EA		\$ 3,000	x	3	\$ 3,000	
2014	W Central	N 5th	N Tennessee	LT	Ramp	Non-Compliant	0	2	3	3	11	Ramp Construction	4		1	EA		\$ 3,000	x	4	\$ 3,000	
2015	S Tennessee				Ramp	Non-Compliant	1	1	2	3	14	Ramp Construction	3		1	EA		\$ 3,000	x	3	\$ 3,000	
2016	S Tennessee				Ramp	Non-Compliant	1	1	2	3	14	Ramp Construction	3		1	EA		\$ 3,000	x	3	\$ 3,000	
2017	E Central				Ramp	Non-Compliant	1	2	2	3	15	Ramp Construction	3		1	EA		\$ 3,000	x	3	\$ 3,000	
2019	W Central	S Tennessee	Bridge	RT	Ramp	Non-Compliant	1	2	3	3	17	Ramp Construction	3		1	EA		\$ 3,000	x	3	\$ 3,000	
2020	N 1st	W Central	Mill	RT	Ramp	Non-Compliant	2	2	2	1	19	Ramp Construction	2		1	EA		\$ 3,000	x	2	\$ 3,000	
2021	E Central				Ramp	Non-Compliant	2	2	2	3	21	Ramp Construction	2		1	EA		\$ 3,000	x	2	\$ 3,000	
2022	W Central	Bridge	S Indiana	RT	Ramp	Non-Compliant	1	2	3	3	17	Ramp Construction	3		1	EA		\$ 3,000	x	3	\$ 3,000	
2023	E Central				Ramp	Non-Compliant	2	2	2	3	21	Ramp Construction	2		1	EA		\$ 3,000	x	2	\$ 3,000	

City of LaFollette Transition Plan - November 2018  
Right of Way Compliance Decision Matrix

Location							Severity					Correction Estimate											
ID	Segment / Building	From	To	Side	Type	Deficiency	Priority Factors (Scale 0 to 3)					Corrective Action	Correction Estimate										
							Barrier	Citizen Request	Constructability	Proximity	Pedestrian Route		Evaluation Score	Evaluation Ranking	Adjusted Ranking (Optional)	Qty	Unit	Misc Structural Cost	Misc Item	Correction Estimate	Selected	Assigned Priority	Selected Total
2024	E Central				Ramp	Non-Compliant	2		2	1	3	19	Ramp Construction	2		1	EA			\$ 3,000	x	2	\$ 3,000
2025	E Central				Ramp	Non-Compliant	2		2	1	3	19	Ramp Construction	2		1	EA			\$ 3,000	x	2	\$ 3,000
2026	E Central				Ramp	Non-Compliant	1		2	1	3	13	Ramp Construction	3		1	EA			\$ 3,000	x	3	\$ 3,000
2027	E Central				Ramp	Non-Compliant	2		2	1	3	19	Ramp Construction	2		1	EA			\$ 3,000	x	2	\$ 3,000
2028	W Central				Ramp	Non-Compliant	2		2	2	3	21	Ramp Construction	2		1	EA			\$ 3,000	x	2	\$ 3,000
2029	W Central				Ramp	Non-Compliant	3		2	2	3	27	Ramp Construction	1		1	EA			\$ 3,000	x	1	\$ 3,000
2030	W Central				Ramp	Non-Compliant	2		2	2	3	21	Ramp Construction	2		1	EA			\$ 3,000	x	2	\$ 3,000
2031	W Central				Ramp	Non-Compliant	2		2	2	3	21	Ramp Construction	2		1	EA			\$ 4,000	x	2	\$ 4,000
2032	W Central				Ramp	Non-Compliant	2		2	2	3	21	Ramp Construction	2		1	EA			\$ 4,000	x	2	\$ 4,000
2033	W Central				Ramp	Non-Compliant	1		2	2	3	15	Ramp Construction	3		1	EA			\$ 4,000	x	3	\$ 4,000
2034	W Central				Ramp	Non-Compliant	1		2	2	3	15	Ramp Construction	3		1	EA			\$ 4,000	x	3	\$ 4,000
2035	W Central	S 11th	S 9th	RT	Ramp	Non-Compliant	0		2	3	3	11	Ramp Construction	4		1	EA			\$ 3,000	x	4	\$ 3,000
2036	Jacksboro Pike				Ramp	Non-Compliant	2		3	2	3	22	Ramp Construction	1		1	EA			\$ 4,000	x	1	\$ 4,000
2037	Jacksboro Pike				Ramp	Non-Compliant	1		3	2	3	16	Ramp Construction	3		1	EA			\$ 4,000	x	3	\$ 4,000
2038	Jacksboro Pike				Ramp	Non-Compliant	3		3	2	3	28	Ramp Construction	1		1	EA			\$ 4,000	x	1	\$ 4,000
2039	Jacksboro Pike				Ramp	Non-Compliant	3		3	2	3	28	Ramp Construction	1		1	EA			\$ 4,000	x	1	\$ 4,000
2040	Jacksboro Pike				Ramp	Non-Compliant	3		3	2	3	28	Ramp Construction	1		1	EA			\$ 4,000	x	1	\$ 4,000
2041	Jacksboro Pike				Ramp	Non-Compliant	1		3	2	3	16	Ramp Construction	3		1	EA			\$ 4,000	x	3	\$ 4,000
2042	Jacksboro Pike				Ramp	Non-Compliant	2		3	2	3	22	Ramp Construction	1		1	EA			\$ 4,000	x	1	\$ 4,000
2043	W Beech	Terminus	S 17th	LT	Ramp	Non-Compliant	2		3	1	1	18	Ramp Construction	2		1	EA			\$ 3,000	x	2	\$ 3,000
2046	Jacksboro Pike				Ramp	Non-Compliant	2		2	2	3	21	Ramp Construction	2		1	EA			\$ 4,000	x	2	\$ 4,000
2049	Jacksboro Pike				Ramp	Non-Compliant	1		2	2	3	15	Ramp Construction	3		1	EA			\$ 4,000	x	3	\$ 4,000
2050	Jacksboro Pike	S 17th	Rich	RT	Ramp	Missing	2		2	3	3	23	Ramp Construction	1		1	EA			\$ 3,000	x	1	\$ 3,000
2051	Jacksboro Pike	S 17th	Rich	RT	Ramp	Missing	2		2	3	3	23	Ramp Construction	1		1	EA			\$ 3,000	x	1	\$ 3,000
2052	W Central				Ramp	Non-Compliant	2		2	2	3	21	Ramp Construction	2		1	EA			\$ 4,000	x	2	\$ 4,000
2053	W Central				Ramp	Non-Compliant	3		2	2	3	27	Ramp Construction	1		1	EA			\$ 4,000	x	1	\$ 4,000
2054	W Central	Rich	S 13th	RT	Ramp	Non-Compliant	0		2	3	3	11	Ramp Construction	4		1	EA			\$ 3,000	x	4	\$ 3,000
2056	W Central	S 13th	S 11th	RT	Ramp	Non-Compliant	0		2	3	3	11	Ramp Construction	4		1	EA			\$ 3,000	x	4	\$ 3,000
2057	W Central	S 9th	S 7th	RT	Ramp	Non-Compliant	0		2	3	3	11	Ramp Construction	4		1	EA			\$ 3,000	x	4	\$ 3,000
2058	W Central				Ramp	Non-Compliant	1		2	2	3	15	Ramp Construction	3		1	EA			\$ 4,000	x	3	\$ 4,000
2060	E Central				Ramp	Non-Compliant	2		2	1	3	19	Ramp Construction	2		1	EA			\$ 4,000	x	2	\$ 4,000
2061	E Central				Ramp	Non-Compliant	1		2	1	3	13	Ramp Construction	3		1	EA			\$ 4,000	x	3	\$ 4,000
2062	E Central				Ramp	Non-Compliant	1		2	1	3	13	Ramp Construction	3		1	EA			\$ 4,000	x	3	\$ 4,000
2063	E Central				Ramp	Non-Compliant	1		2	1	3	13	Ramp Construction	3		1	EA			\$ 4,000	x	3	\$ 4,000
2064	E Central				Ramp	Non-Compliant	1		2	1	3	13	Ramp Construction	3		1	EA			\$ 4,000	x	3	\$ 4,000
2065	E Central				Ramp	Non-Compliant	1		2	1	3	13	Ramp Construction	3		1	EA			\$ 4,000	x	3	\$ 4,000
2066	E Central				Ramp	Non-Compliant	1		2	1	3	13	Ramp Construction	3		1	EA			\$ 4,000	x	3	\$ 4,000
2067	E Central				Ramp	Non-Compliant	1		2	1	3	13	Ramp Construction	3		1	EA			\$ 4,000	x	3	\$ 4,000
2068	E Central				Ramp	Non-Compliant	1		2	1	3	13	Ramp Construction	3		1	EA			\$ 4,000	x	3	\$ 4,000
2069	E Central				Ramp	Non-Compliant	1		2	1	3	13	Ramp Construction	3		1	EA			\$ 4,000	x	3	\$ 4,000
2070	E Central				Ramp	Non-Compliant	1		2	1	3	13	Ramp Construction	3		1	EA			\$ 4,000	x	3	\$ 4,000
2071	E Central				Ramp	Non-Compliant	1		2	1	3	13	Ramp Construction	3		1	EA			\$ 4,000	x	3	\$ 4,000
2072	E Central				Ramp	Missing	3		2	1	3	25	Ramp Construction	1		1	EA			\$ 4,000	x	1	\$ 4,000
2073	E Central				Ramp	Non-Compliant	1		2	1	3	13	Ramp Construction	3		1	EA			\$ 4,000	x	3	\$ 4,000
2074	E Central				Ramp	Non-Compliant	1		2	1	3	13	Ramp Construction	3		1	EA			\$ 4,000	x	3	\$ 4,000
2076	E Central				Ramp	Non-Compliant	3		2	1	3	25	Ramp Construction	1		1	EA			\$ 4,000	x	1	\$ 4,000
2077	E Central				Ramp	Non-Compliant	2		2	1	3	19	Ramp Construction	2		1	EA			\$ 4,000	x	2	\$ 4,000

City of LaFollette Transition Plan - November 2018  
Right of Way Compliance Decision Matrix

Location							Severity					Correction Estimate											
ID	Segment / Building	From	To	Side	Type	Deficiency	Priority Factors (Scale 0 to 3)					Correction Estimate											
							Barrier	Citizen Request	Constructability	Proximity	Pedestrian Route	Evaluation Score	Corrective Action	Evaluation Ranking	Adjusted Ranking (Optional)	Qty	Unit	Misc Structural Cost	Misc Item	Correction Estimate	Selected	Assigned Priority	Selected Total
2078	E Central				Ramp	Non-Compliant	3		2	1	3	25	Ramp Construction	1		1	EA			\$ 4,000	x	1	\$ 4,000
2079	E Central				Ramp	Non-Compliant	3		2	1	3	25	Ramp Construction	1		1	EA			\$ 4,000	x	1	\$ 4,000
2080	E Central				Ramp	Non-Compliant	3		2	1	3	25	Ramp Construction	1		1	EA			\$ 4,000	x	1	\$ 4,000
2081	E Central				Ramp	Non-Compliant	2		2	1	3	19	Ramp Construction	2		1	EA			\$ 4,000	x	2	\$ 4,000
2082	E Central				Ramp	Non-Compliant	3		3	1	3	26	Ramp Construction	1		1	EA			\$ 4,000	x	1	\$ 4,000
2083	E Central				Ramp	Non-Compliant	3		3	1	3	26	Ramp Construction	1		1	EA			\$ 4,000	x	1	\$ 4,000
2084	E Central				Ramp	Non-Compliant	1		2	1	3	13	Ramp Construction	3		1	EA			\$ 4,000	x	3	\$ 4,000
2085	E Central				Ramp	Non-Compliant	3		2	1	3	25	Ramp Construction	1		1	EA			\$ 4,000	x	1	\$ 4,000
2086	E Central				Ramp	Non-Compliant	3		2	1	3	25	Ramp Construction	1		1	EA			\$ 4,000	x	1	\$ 4,000
2087	E Central				Ramp	Non-Compliant	2		2	1	3	19	Ramp Construction	2		1	EA			\$ 4,000	x	2	\$ 4,000
2088	E Central				Ramp	Non-Compliant	1		2	1	3	13	Ramp Construction	3		1	EA			\$ 4,000	x	3	\$ 4,000
2089	E Central				Ramp	Non-Compliant	3		2	1	3	25	Ramp Construction	1		1	EA			\$ 4,000	x	1	\$ 4,000
2090	E Central				Ramp	Non-Compliant	3		2	1	3	25	Ramp Construction	1		1	EA			\$ 4,000	x	1	\$ 4,000
2091	E Central				Ramp	Non-Compliant	2		2	1	3	19	Ramp Construction	2		1	EA			\$ 4,000	x	2	\$ 4,000
2092	W Central	N 5th	N Tennessee	LT	Ramp	Non-Compliant	0		2	3	3	11	Ramp Construction	4		1	EA			\$ 3,000	x	4	\$ 3,000
2093	W Central				Ramp	Non-Compliant	2		2	2	3	21	Ramp Construction	2		1	EA			\$ 4,000	x	2	\$ 4,000
2095	W Central	N 7th	N 5th	LT	Ramp	Non-Compliant	1		3	3	3	18	Ramp Construction	2		1	EA			\$ 3,000	x	2	\$ 3,000
2096	W Central	N 7th	N 5th	LT	Ramp	Non-Compliant	1		3	3	3	18	Ramp Construction	2		1	EA			\$ 3,000	x	2	\$ 3,000
2097	W Central	N 9th	N 7th	LT	Ramp	Non-Compliant	1		3	3	3	18	Ramp Construction	2		1	EA			\$ 3,000	x	2	\$ 3,000
2099	W Central				Ramp	Missing	2		2	2	3	21	Ramp Construction	2		1	EA			\$ 4,000	x	2	\$ 4,000
2100	W Central	N 13th	N 11th	LT	Ramp	Non-Compliant	1		2	3	3	17	Ramp Construction	3		1	EA			\$ 3,000	x	3	\$ 3,000
2101	W Central	N 13th	N 11th	LT	Ramp	Non-Compliant	1		2	3	3	17	Ramp Construction	3		1	EA			\$ 3,000	x	3	\$ 3,000
2102	W Central				Ramp	Non-Compliant	2		2	2	3	21	Ramp Construction	2		1	EA			\$ 4,000	x	2	\$ 4,000
2103	W Central				Ramp	Non-Compliant	2		2	2	3	21	Ramp Construction	2		1	EA			\$ 4,000	x	2	\$ 4,000
2104	W Central				Ramp	Non-Compliant	1		2	2	3	15	Ramp Construction	3		1	EA			\$ 4,000	x	3	\$ 4,000
2105	W Central	RR W Central	N 13th	LT	Ramp	Non-Compliant	0		2	3	3	11	Ramp Construction	4		1	EA			\$ 3,000	x	4	\$ 3,000
2106	W Central	N 21st	N 19th	LT	Ramp	Missing	2		2	2	2	20	Ramp Construction	2		1	EA			\$ 3,000	x	2	\$ 3,000
2107	W Central	N 21st	N 19th	LT	Ramp	Missing	2		2	2	2	20	Ramp Construction	2		1	EA			\$ 3,000	x	2	\$ 3,000
2108	W Central	N 23rd	N 21st	LT	Ramp	Missing	2		2	2	2	20	Ramp Construction	2		1	EA			\$ 3,000	x	2	\$ 3,000
2109	W Central	N 23rd	N 21st	LT	Ramp	Missing	2		2	2	2	20	Ramp Construction	2		1	EA			\$ 3,000	x	2	\$ 3,000
2110	W Central	N 23rd	N 21st	LT	Ramp	Missing	2		2	2	2	20	Ramp Construction	2		1	EA			\$ 3,000	x	2	\$ 3,000
2111	W Central	N 25th	N 23rd	LT	Ramp	Missing	2		2	2	2	20	Ramp Construction	2		1	EA			\$ 3,000	x	2	\$ 3,000
2112	W Central	N 23rd	N 21st	LT	Ramp	Missing	2		2	2	2	20	Ramp Construction	2		1	EA			\$ 3,000	x	2	\$ 3,000
2113	W Central	N 25th	N 23rd	LT	Ramp	Missing	2		2	2	2	20	Ramp Construction	2		1	EA			\$ 3,000	x	2	\$ 3,000
2114	W Central	N 27th	N 25th	LT	Ramp	Missing	2		2	2	2	20	Ramp Construction	2		1	EA			\$ 3,000	x	2	\$ 3,000
2115	W Beech	S 17th	Rich	LT	Ramp	Non-Compliant	2		2	1	1	17	Ramp Construction	3		1	EA			\$ 3,000	x	3	\$ 3,000
2116	W Beech	Rich	S 13th	LT	Ramp	Non-Compliant	2		1	1	1	16	Ramp Construction	3		1	EA			\$ 3,000	x	3	\$ 3,000
2117	W Beech	Rich	S 13th	LT	Ramp	Non-Compliant	2		1	1	1	16	Ramp Construction	3		1	EA			\$ 3,000	x	3	\$ 3,000
2118	W Beech	S 13th	S 11th	LT	Ramp	Non-Compliant	3		2	1	1	23	Ramp Construction	1		1	EA			\$ 3,000	x	1	\$ 3,000
2120	S 9th	W Central	W Beech	RT	Ramp	Non-Compliant	2		2	3	1	21	Ramp Construction	2		1	EA			\$ 3,000	x	2	\$ 3,000
2121	S 9th	W Central	W Beech	RT	Ramp	Non-Compliant	2		2	3	1	21	Ramp Construction	2		1	EA			\$ 3,000	x	2	\$ 3,000
2122	S 9th	W Central	W Beech	RT	Ramp	Non-Compliant	2		2	3	1	21	Ramp Construction	2		1	EA			\$ 3,000	x	2	\$ 3,000
2123	S 9th	W Central	W Beech	RT	Ramp	Non-Compliant	2		2	3	1	21	Ramp Construction	2		1	EA			\$ 3,000	x	2	\$ 3,000
2124	S 9th	W Central	W Beech	LT	Ramp	Non-Compliant	1		2	3	1	15	Ramp Construction	3		1	EA			\$ 3,000	x	3	\$ 3,000
2125	W Beech	S 11th	S 9th	LT	Ramp	Non-Compliant	3		2	1	1	23	Ramp Construction	1		1	EA			\$ 3,000	x	1	\$ 3,000
2126	S 9th	W Central	W Beech	LT	Ramp	Non-Compliant	1		2	3	1	15	Ramp Construction	3		1	EA			\$ 3,000	x	3	\$ 3,000
2127	W Central				Ramp	Non-Compliant	1		2	2	3	15	Ramp Construction	3		1	EA			\$ 4,000	x	3	\$ 4,000

City of LaFollette Transition Plan - November 2018  
Right of Way Compliance Decision Matrix

Location							Severity					Correction Estimate											
ID	Segment / Building	From	To	Side	Type	Deficiency	Priority Factors (Scale 0 to 3)					Correction Estimate											
							Barrier	Citizen Request	Constructability	Proximity	Pedestrian Route	Evaluation Score	Corrective Action	Evaluation Ranking	Adjusted Ranking (Optional)	Qty	Unit	Misc Structural Cost	Misc Item	Correction Estimate	Selected	Assigned Priority	Selected Total
2128	W Walden				Ramp	Missing	3		3	2	1	26	Ramp Construction	1		1	EA			\$ 4,000	x	1	\$ 4,000
2129	W Walden	N 7th	N 5th	LT	Ramp	Missing	3		1	1	1	22	Ramp Construction	1		1	EA			\$ 3,000	x	1	\$ 3,000
2130	W Walden	N 7th	N 5th	RT	Ramp	Missing	3		1	1	1	22	Ramp Construction	1		1	EA			\$ 3,000	x	1	\$ 3,000
2131	N 5th				Ramp	Non-Compliant	2		1	2	1	18	Ramp Construction	2		1	EA			\$ 4,000	x	2	\$ 4,000
2132	N 5th	W Central	W Walden	LT	Ramp	Non-Compliant	0		2	1	1	5	Ramp Construction	4		1	EA			\$ 3,000	x	4	\$ 3,000
2133	W Beech	S Tennessee	Depot	RT	Ramp	Non-Compliant	3		3	3	1	28	Ramp Construction	1		1	EA			\$ 3,000	x	1	\$ 3,000
2134	W Beech				Ramp	Non-Compliant	2		2	3	2	22	Ramp Construction	1		1	EA			\$ 4,000	x	1	\$ 4,000
2135	W Beech				Ramp	Non-Compliant	2		2	3	2	22	Ramp Construction	1		1	EA			\$ 4,000	x	1	\$ 4,000
2136	W Chestnut	S 7th Terminus	S 5th	LT	Ramp	Missing	2		3	0	0	15	Ramp Construction	3		1	EA			\$ 3,000	x	3	\$ 3,000
2137	W Fir	S 5th	S Tennessee	RT	Ramp	Non-Compliant	2		3	2	1	20	Ramp Construction	2		1	EA			\$ 3,000	x	2	\$ 3,000
2138	S Tennessee	W Chestnut	W Elm	RT	Ramp	Non-Compliant	1		3	2	2	15	Ramp Construction	3		1	EA			\$ 3,000	x	3	\$ 3,000
2140	Mill	N Tennessee	N 1st	LT	Ramp	Non-Compliant	3		2	1	1	23	Ramp Construction	1		1	EA			\$ 3,000	x	1	\$ 3,000
2141	N Indiana				Ramp	Non-Compliant	1		3	1	3	14	Ramp Construction	3		1	EA			\$ 4,000	x	3	\$ 4,000
2142	N Indiana				Ramp	Non-Compliant	3		3	1	3	26	Ramp Construction	1		1	EA			\$ 4,000	x	1	\$ 4,000
2143	N Indiana	E Walden	E Prospect	RT	Ramp	Non-Compliant	2		2	1	2	18	Ramp Construction	2		1	EA			\$ 3,000	x	2	\$ 3,000
2144	N Indiana	E Walden	E Prospect	RT	Ramp	Non-Compliant	2		2	1	2	18	Ramp Construction	2		1	EA			\$ 3,000	x	2	\$ 3,000
2145	N Indiana	E Central	E Walden	RT	Ramp	Non-Compliant	2		2	2	2	20	Ramp Construction	2		1	EA			\$ 3,000	x	2	\$ 3,000
2146	S Indiana	E Beech	E Chestnut	RT	Ramp	Multiple Deficiencies	3		2	2	2	26	Ramp Construction	1		1	EA			\$ 3,000	x	1	\$ 3,000
2147	S Indiana	E Central	E Beech	RT	Ramp	Non-Compliant	1		2	3	2	16	Ramp Construction	3		1	EA			\$ 3,000	x	3	\$ 3,000
2148	E Beech	S Indiana	S 4th	LT	Ramp	Broken	3		2	2	1	25	Ramp Construction	1		1	EA			\$ 3,000	x	1	\$ 3,000
2150	E Beech				Ramp	Non-Compliant	2		2	2	2	20	Ramp Construction	2		1	EA			\$ 4,000	x	2	\$ 4,000
2151	River Dr	E Beech	E Chestnut	LT	Ramp	Non-Compliant	3		2	1	0	22	Ramp Construction	1		1	EA			\$ 3,000	x	1	\$ 3,000
2153	E Beech				Ramp	Non-Compliant	2		2	2	2	20	Ramp Construction	2		1	EA			\$ 4,000	x	2	\$ 4,000
2154	E Beech				Ramp	Non-Compliant	3		2	2	2	26	Ramp Construction	1		1	EA			\$ 4,000	x	1	\$ 4,000
2155	E Beech				Ramp	Non-Compliant	2		2	2	2	20	Ramp Construction	2		1	EA			\$ 4,000	x	2	\$ 4,000
2156	E Beech				Ramp	Non-Compliant	2		2	2	2	20	Ramp Construction	2		1	EA			\$ 4,000	x	2	\$ 4,000
2158	River Dr	E Chestnut	E Elm	LT	Ramp	Non-Compliant	2		3	1	0	17	Ramp Construction	3		1	EA			\$ 3,000	x	3	\$ 3,000
2159	E Chestnut	River Dr	S Indiana	RT	Ramp	Non-Compliant	2		2	2	1	19	Ramp Construction	2		1	EA			\$ 3,000	x	2	\$ 3,000
2161	E Chesnut				Ramp	Non-Compliant	2		3	2	1	20	Ramp Construction	2		1	EA			\$ 4,000	x	2	\$ 4,000
2162	E Chestnut	River Dr	S Indiana	RT	Ramp	Non-Compliant	2		2	2	1	19	Ramp Construction	2		1	EA			\$ 3,000	x	2	\$ 3,000
2163	S Indiana	E Beech	E Chestnut	RT	Ramp	Multiple Deficiencies	3		2	2	2	26	Ramp Construction	1		1	EA			\$ 3,000	x	1	\$ 3,000
2164	S Indiana				Ramp	Non-Compliant	3		3	1	3	26	Ramp Construction	1		1	EA			\$ 4,000	x	1	\$ 4,000
2165	S Indiana	E Elm	E Hemlock	RT	Ramp	Non-Compliant	2		1	2	2	19	Ramp Construction	2		1	EA			\$ 3,000	x	2	\$ 3,000
2166	River Dr	E Chestnut	E Elm	LT	Ramp	Non-Compliant	2		3	1	0	17	Ramp Construction	3		1	EA			\$ 3,000	x	3	\$ 3,000
2167	S Indiana	E Elm	E Hemlock	RT	Ramp	Non-Compliant	2		1	2	2	19	Ramp Construction	2		1	EA			\$ 3,000	x	2	\$ 3,000
2168	Sharp Ln	W Terminus	Sharps Cir	RT	Ramp	Non-Compliant	3		3	0	0	21	Ramp Construction	2		1	EA			\$ 3,000	x	2	\$ 3,000
2169	E Kentucky	S 4th	Circle Drive	RT	Ramp	Non-Compliant	2		3	1	1	18	Ramp Construction	2		1	EA			\$ 3,000	x	2	\$ 3,000
2170	Sharps Cir	Sharp Ln	S 4th	RT	Ramp	Non-Compliant	3		3	0	0	21	Ramp Construction	2		1	EA			\$ 3,000	x	2	\$ 3,000
2171	S 4th	E Kentucky	Circle Drive	LT	Ramp	Non-Compliant	3		2	0	1	21	Ramp Construction	2		1	EA			\$ 3,000	x	2	\$ 3,000
2172	S 4th	Circle Drive	E Virginia	LT	Ramp	Non-Compliant	2		2	0	1	15	Ramp Construction	3		1	EA			\$ 3,000	x	3	\$ 3,000
2173	Circle				Ramp	Missing	3		2	0	0	20	Ramp Construction	2		1	EA			\$ 4,000	x	2	\$ 4,000
2174	E Kentucky	Circle Drive	S 8th	RT	Ramp	Non-Compliant	2		3	1	1	18	Ramp Construction	2		1	EA			\$ 3,000	x	2	\$ 3,000
2175	E Kentucky	S 4th	Circle Drive	RT	Ramp	Non-Compliant	2		3	1	1	18	Ramp Construction	2		1	EA			\$ 3,000	x	2	\$ 3,000
2176	E Kentucky	S 4th	Circle Drive	RT	Ramp	Non-Compliant	2		3	1	1	18	Ramp Construction	2		1	EA			\$ 3,000	x	2	\$ 3,000
2177	E Kentucky	S 4th	Circle Drive	RT	Ramp	Non-Compliant	2		3	1	1	18	Ramp Construction	2		1	EA			\$ 3,000	x	2	\$ 3,000
2178	E Kentucky	Circle Drive	S 8th	RT	Ramp	Non-Compliant	2		3	1	1	18	Ramp Construction	2		1	EA			\$ 3,000	x	2	\$ 3,000
2179	E Kentucky	S 8th	S Cumberland	RT	Ramp	Non-Compliant	2		3	1	1	18	Ramp Construction	2		1	EA			\$ 3,000	x	2	\$ 3,000

City of LaFollette Transition Plan - November 2018  
Right of Way Compliance Decision Matrix

Location							Severity					Correction Estimate										
ID	Segment / Building	From	To	Side	Type	Deficiency	Priority Factors (Scale 0 to 3)					Corrective Action	Correction Estimate									
							Barrier	Citizen Request	Constructability	Proximity	Pedestrian Route		Evaluation Score	Evaluation Ranking	Adjusted Ranking (Optional)	Qty	Unit	Misc Structural Cost	Misc Item	Correction Estimate	Selected	Assigned Priority
2180	E Kentucky	S Cumberland	Alexander	RT	Ramp	Non-Compliant	1	3	1	1	12	Ramp Construction	4	1	EA		\$ 3,000	x	4	\$ 3,000		
2181	S Cumberland	E Hemlock	E Kentucky	RT	Ramp	Non-Compliant	2	3	2	2	21	Ramp Construction	2	1	EA		\$ 3,000	x	2	\$ 3,000		
2182	E Kentucky	S Cumberland	Alexander	RT	Ramp	Non-Compliant	1	3	1	1	12	Ramp Construction	4	1	EA		\$ 3,000	x	4	\$ 3,000		
2183	E Kentucky				Ramp	Non-Compliant	3	2	2	1	25	Ramp Construction	1	1	EA		\$ 4,000	x	1	\$ 4,000		
2184	S 12th	E Hemlock	E Kentucky	LT	Ramp	Missing	3	3	1	1	24	Ramp Construction	1	1	EA		\$ 3,000	x	1	\$ 3,000		
2185	S 12th	E Fir	E Hemlock	LT	Ramp	Non-Compliant	2	2	1	1	17	Ramp Construction	3	1	EA		\$ 3,000	x	3	\$ 3,000		
2186	S 12th	E Hemlock	E Kentucky	LT	Ramp	Missing	3	3	1	1	24	Ramp Construction	1	1	EA		\$ 3,000	x	1	\$ 3,000		
2187	E Kentucky				Ramp	Non-Compliant	2	2	2	1	19	Ramp Construction	2	1	EA		\$ 4,000	x	2	\$ 4,000		
2188	S Cumberland	E Kentucky	E Virginia	LT	Ramp	Missing	3	1	1	2	23	Ramp Construction	1	1	EA		\$ 3,000	x	1	\$ 3,000		
2189	S 6th	E Virginia	E Hill	RT	Ramp	Non-Compliant	2	2	0	1	15	Ramp Construction	3	1	EA		\$ 3,000	x	3	\$ 3,000		
2190	S 4th	Circle Drive	E Virginia	LT	Ramp	Non-Compliant	2	2	0	1	15	Ramp Construction	3	1	EA		\$ 3,000	x	3	\$ 3,000		
2191	S 4th				Ramp	Non-Compliant	2	2	2	1	19	Ramp Construction	2	1	EA		\$ 4,000	x	2	\$ 4,000		
2192	E Hill	S 6th	Terminus	RT	Ramp	Broken	3	2	0	1	21	Ramp Construction	2	1	EA		\$ 3,000	x	2	\$ 3,000		
2193	E Hill	S 6th	Terminus	RT	Ramp	Broken	3	2	0	1	21	Ramp Construction	2	1	EA		\$ 3,000	x	2	\$ 3,000		
2194	S 12th	E Central	E Ash	RT	Ramp	Non-Compliant	2	2	2	1	19	Ramp Construction	2	1	EA		\$ 3,000	x	2	\$ 3,000		
2195	S 12th	E Elm	E Fir	LT	Ramp	Non-Compliant	3	3	1	1	24	Ramp Construction	1	1	EA		\$ 3,000	x	1	\$ 3,000		
2198	Jacksboro Pike				Ramp	Non-Compliant	1	3	1	3	14	Ramp Construction	3	1	EA		\$ 4,000	x	3	\$ 4,000		
2199	Jacksboro Pike				Ramp	Non-Compliant	1	3	1	3	14	Ramp Construction	3	1	EA		\$ 4,000	x	3	\$ 4,000		
2200	Jacksboro Pike				Ramp	Non-Compliant	1	3	1	3	14	Ramp Construction	3	1	EA		\$ 4,000	x	3	\$ 4,000		
2218	S Tennessee				Ramp	Missing	2	3	2	2	21	Ramp Construction	2	1	EA		\$ 3,000	x	2	\$ 3,000		
2219	N Indiana	E Central	E Walden	RT	Ramp	Non-Compliant	2	2	2	2	20	Ramp Construction	2	1	EA		\$ 3,000	x	2	\$ 3,000		
2220	E Central				Ramp	Missing	2	2	2	2	20	Ramp Construction	2	1	EA		\$ 3,000	x	2	\$ 3,000		
2221	E Central				Ramp	Missing	2	2	2	2	20	Ramp Construction	2	1	EA		\$ 3,000	x	2	\$ 3,000		
2222	E Central				Ramp	Missing	2	2	2	2	20	Ramp Construction	2	1	EA		\$ 3,000	x	2	\$ 3,000		
2223	S 12th	E Ash	E Beech	RT	Ramp	Missing	3	2	1	1	23	Ramp Construction	1	1	EA		\$ 3,000	x	1	\$ 3,000		
2224	E Beech	S Cumberland	S 12th	LT	Ramp	Missing	3	3	2	1	26	Ramp Construction	1	1	EA		\$ 3,000	x	1	\$ 3,000		
2225	E Beech	S 12th	S 14th	RT	Ramp	Multiple Deficiencies	3	3	2	1	26	Ramp Construction	1	1	EA		\$ 3,000	x	1	\$ 3,000		
2226	S 12th	E Beech	E Chestnut	RT	Ramp	Non-Compliant	2	2	1	1	17	Ramp Construction	3	1	EA		\$ 3,000	x	3	\$ 3,000		
2227	S Cumberland	E Ash	E Beech	LT	Ramp	Missing	3	2	2	2	26	Ramp Construction	1	1	EA		\$ 3,000	x	1	\$ 3,000		
2228	S Cumberland	E Ash	E Beech	LT	Ramp	Missing	3	2	2	2	26	Ramp Construction	1	1	EA		\$ 3,000	x	1	\$ 3,000		
2229	E Ash	S Cumberland	S 12th	RT	Ramp	Non-Compliant	3	1	2	1	24	Ramp Construction	1	1	EA		\$ 3,000	x	1	\$ 3,000		
2230	E Beech	S 8th	S Cumberland	LT	Ramp	Missing	3	3	2	1	26	Ramp Construction	1	1	EA		\$ 3,000	x	1	\$ 3,000		
2231	S Cumberland	E Beech	E Chestnut	RT	Ramp	Non-Compliant	2	3	2	2	21	Ramp Construction	2	1	EA		\$ 3,000	x	2	\$ 3,000		
2232	S 6th	E Central	E Ash	LT	Ramp	Non-Compliant	3	1	2	1	24	Ramp Construction	1	1	EA		\$ 3,000	x	1	\$ 3,000		
2233	S 6th	E Central	E Ash	RT	Ramp	Non-Compliant	2	3	2	1	20	Ramp Construction	2	1	EA		\$ 3,000	x	2	\$ 3,000		
2234	E Ash	S 4th	S 6th	LT	Ramp	Non-Compliant	3	3	2	1	26	Ramp Construction	1	1	EA		\$ 3,000	x	1	\$ 3,000		
2235	E Ash	S 6th	Terminus	LT	Ramp	Non-Compliant	3	2	2	1	25	Ramp Construction	1	1	EA		\$ 3,000	x	1	\$ 3,000		
2236	E Ash	S 6th	Terminus	LT	Ramp	Non-Compliant	3	2	2	1	25	Ramp Construction	1	1	EA		\$ 3,000	x	1	\$ 3,000		
2237	E Ash	S 6th	Terminus	RT	Ramp	Non-Compliant	3	2	2	1	25	Ramp Construction	1	1	EA		\$ 3,000	x	1	\$ 3,000		
2238	E Ash	S 6th	Terminus	RT	Ramp	Non-Compliant	3	2	2	1	25	Ramp Construction	1	1	EA		\$ 3,000	x	1	\$ 3,000		
2239	E Ash	S 4th	S 6th	RT	Ramp	Non-Compliant	3	3	2	1	26	Ramp Construction	1	1	EA		\$ 3,000	x	1	\$ 3,000		
2240	S 4th	E Central	E Ash	LT	Ramp	Missing	3	3	2	1	26	Ramp Construction	1	1	EA		\$ 3,000	x	1	\$ 3,000		
2241	S 4th	E Ash	E Beech	LT	Ramp	Missing	3	3	1	1	24	Ramp Construction	1	1	EA		\$ 3,000	x	1	\$ 3,000		
2242	S 4th	E Ash	E Beech	LT	Ramp	Missing	3	3	1	1	24	Ramp Construction	1	1	EA		\$ 3,000	x	1	\$ 3,000		
2243	E Beech	S Indiana	S 4th	LT	Ramp	Broken	3	2	2	1	25	Ramp Construction	1	1	EA		\$ 3,000	x	1	\$ 3,000		
2244	E Beech	S 4th	S 6th	LT	Ramp	Missing	3	3	2	1	26	Ramp Construction	1	1	EA		\$ 3,000	x	1	\$ 3,000		
2245	E Beech	S 6th	S 8th	LT	Ramp	Missing	3	3	2	1	26	Ramp Construction	1	1	EA		\$ 3,000	x	1	\$ 3,000		

City of LaFollette Transition Plan - November 2018  
Right of Way Compliance Decision Matrix

Location						Severity						Correction Estimate										
ID	Segment / Building	From	To	Side	Type	Deficiency	Priority Factors (Scale 0 to 3)						Correction Estimate									
							Barrier	Citizen Request	Constructability	Proximity	Pedestrian Route	Evaluation Score	Corrective Action	Evaluation Ranking	Adjusted Ranking (Optional)	Qty	Unit	Misc Structural Cost	Misc Item	Correction Estimate	Selected	Assigned Priority
2246	S 14th	E Beech	E Chestnut	RT	Ramp	Missing	3	3	1	1	24	Ramp Construction	1		1	EA			\$ 3,000	x	1	\$ 3,000
2247	S 14th	E Beech	E Chestnut	RT	Ramp	Missing	3	3	1	1	24	Ramp Construction	1		1	EA			\$ 3,000	x	1	\$ 3,000
2248	S 14th	E Chestnut	E Elm	RT	Ramp	Missing	3	2	1	1	23	Ramp Construction	1		1	EA			\$ 3,000	x	1	\$ 3,000
2249	S 14th	E Chestnut	E Elm	RT	Ramp	Missing	3	2	1	1	23	Ramp Construction	1		1	EA			\$ 3,000	x	1	\$ 3,000
2250	S 12th	E Chestnut	E Elm	LT	Ramp	Missing	3	3	1	1	24	Ramp Construction	1		1	EA			\$ 3,000	x	1	\$ 3,000
2251	E Chestnut	S 12th	S 14th	RT	Ramp	Non-Compliant	3	3	3	1	28	Ramp Construction	1		1	EA			\$ 3,000	x	1	\$ 3,000
2252	S 12th	E Beech	E Chestnut	RT	Ramp	Non-Compliant	2	2	1	1	17	Ramp Construction	3		1	EA			\$ 3,000	x	3	\$ 3,000
2253	S Cumberland	E Beech	E Chestnut	RT	Ramp	Non-Compliant	2	3	2	2	21	Ramp Construction	2		1	EA			\$ 3,000	x	2	\$ 3,000
2254	S Cumberland	E Chestnut	E Elm	RT	Ramp	Non-Compliant	2	2	3	2	22	Ramp Construction	1		1	EA			\$ 3,000	x	1	\$ 3,000
2255	S Cumberland	E Chestnut	E Elm	RT	Ramp	Non-Compliant	2	2	3	2	22	Ramp Construction	1		1	EA			\$ 3,000	x	1	\$ 3,000
2256	S Cumberland	E Elm	E Fir	RT	Ramp	Non-Compliant	2	1	2	2	19	Ramp Construction	2		1	EA			\$ 3,000	x	2	\$ 3,000
2257	S Cumberland	E Elm	E Fir	RT	Ramp	Non-Compliant	2	1	2	2	19	Ramp Construction	2		1	EA			\$ 3,000	x	2	\$ 3,000
2258	S Cumberland	E Fir	E Hemlock	RT	Ramp	Non-Compliant	2	1	2	2	19	Ramp Construction	2		1	EA			\$ 3,000	x	2	\$ 3,000
2259	S Cumberland	E Fir	E Hemlock	RT	Ramp	Non-Compliant	2	1	2	2	19	Ramp Construction	2		1	EA			\$ 3,000	x	2	\$ 3,000
2260	S Cumberland	E Hemlock	E Kentucky	RT	Ramp	Non-Compliant	2	3	2	2	21	Ramp Construction	2		1	EA			\$ 3,000	x	2	\$ 3,000
2261	E Kentucky	S 8th	S Cumberland	RT	Ramp	Non-Compliant	2	3	1	1	18	Ramp Construction	2		1	EA			\$ 3,000	x	2	\$ 3,000
2262	S 12th	E Fir	E Hemlock	LT	Ramp	Missing	2	2	1	1	17	Ramp Construction	3		1	EA			\$ 3,000	x	3	\$ 3,000
2263	E Hemlock				Ramp	Missing	3	1	2	1	24	Ramp Construction	1		1	EA			\$ 4,000	x	1	\$ 4,000
2264	E Virginia	S 4th	S 6th	LT	Ramp	Missing	3	2	0	1	21	Ramp Construction	2		1	EA			\$ 3,000	x	2	\$ 3,000
2265	E Virginia	S 4th	S 6th	LT	Ramp	Missing	3	2	0	1	21	Ramp Construction	2		1	EA			\$ 3,000	x	2	\$ 3,000
2266	S 4th	E Kentucky	Circle Drive	LT	Ramp	Non-Compliant	3	2	0	1	21	Ramp Construction	2		1	EA			\$ 3,000	x	2	\$ 3,000
2267	S 4th	E Kentucky	Sharps Cir	RT	Ramp	Missing	3	1	0	1	20	Ramp Construction	2		1	EA			\$ 3,000	x	2	\$ 3,000
2268	Sharps Cir			LT	Ramp	Missing	3	3	0	0	21	Ramp Construction	2		1	EA			\$ 3,000	x	2	\$ 3,000
2269	Sharps Cir			LT	Ramp	Missing	3	3	0	0	21	Ramp Construction	2		1	EA			\$ 3,000	x	2	\$ 3,000
2270	Sharps Cir	Sharp Ln	Terminus	LT	Ramp	Non-Compliant	3	3	0	0	21	Ramp Construction	2		1	EA			\$ 3,000	x	2	\$ 3,000
2271	Sharps Cir	Sharp Ln	Terminus	LT	Ramp	Non-Compliant	3	3	0	0	21	Ramp Construction	2		1	EA			\$ 3,000	x	2	\$ 3,000
2272	Sharp Ln	Sharps Cir	S 4th	RT	Ramp	Non-Compliant	3	3	0	0	21	Ramp Construction	2		1	EA			\$ 3,000	x	2	\$ 3,000
2273	Sharp Ln	W Terminus	Sharps Cir	RT	Ramp	Non-Compliant	3	3	0	0	21	Ramp Construction	2		1	EA			\$ 3,000	x	2	\$ 3,000
2274	Sharp Ln	W Terminus	E Terminus	LT	Ramp	Non-Compliant	3	3	0	0	21	Ramp Construction	2		1	EA			\$ 3,000	x	2	\$ 3,000
2275	Sharp Ln	W Terminus	E Terminus	LT	Ramp	Non-Compliant	3	3	0	0	21	Ramp Construction	2		1	EA			\$ 3,000	x	2	\$ 3,000
2276	Sharp Ln	Sharps Cir	S 4th	RT	Ramp	Non-Compliant	3	3	0	0	21	Ramp Construction	2		1	EA			\$ 3,000	x	2	\$ 3,000
2277	S 4th	Sharp	E Kentucky	RT	Ramp	Missing	3	2	0	1	21	Ramp Construction	2		1	EA			\$ 3,000	x	2	\$ 3,000
2278	S 4th	E Kentucky	Sharps Cir	RT	Ramp	Missing	3	1	0	1	20	Ramp Construction	2		1	EA			\$ 3,000	x	2	\$ 3,000
2279	River Dr	E Elm	Terminus	LT	Ramp	Non-Compliant	2	3	1	0	17	Ramp Construction	3		1	EA			\$ 3,000	x	3	\$ 3,000
2280	E Beech			LT	Ramp	Missing	2	2	3	2	22	Ramp Construction	1		1	EA			\$ 3,000	x	1	\$ 3,000
2280	E Beech				Ramp	Missing	3	2	3	2	28	Ramp Construction	1		1	EA			\$ 4,000	x	1	\$ 4,000
2281	S Tennessee			LT	Ramp	Missing	2	2	3	3	23	Ramp Construction	1		1	EA			\$ 3,000	x	1	\$ 3,000
2281	S Tennessee				Ramp	Missing	3	1	3	3	28	Ramp Construction	1		1	EA			\$ 4,000	x	1	\$ 4,000
2282	W Chestnut	S 5th	S Tennessee	LT	Ramp	Missing	2	3	2	1	20	Ramp Construction	2		1	EA			\$ 3,000	x	2	\$ 3,000
2283	S Tennessee	W Chestnut	W Elm	LT	Ramp	Non-Compliant	1	3	2	2	15	Ramp Construction	3		1	EA			\$ 3,000	x	3	\$ 3,000
2284	W Chestnut				Ramp	Missing	3	3	2	1	26	Ramp Construction	1		1	EA			\$ 4,000	x	1	\$ 4,000
2284	W Chestnut				Ramp	Missing	3	2	2	1	25	Ramp Construction	1		1	EA			\$ 3,000	x	1	\$ 3,000
2285	W Chestnut	S 5th	S Tennessee	LT	Ramp	Missing	2	3	2	1	20	Ramp Construction	2		1	EA			\$ 3,000	x	2	\$ 3,000
2286	S 5th	W Chestnut	W Elm	RT	Ramp	Missing	2	3	0	1	16	Ramp Construction	3		1	EA			\$ 3,000	x	3	\$ 3,000
2287	S 5th	Terminus	W Chestnut	RT	Ramp	Missing	2	3	1	0	17	Ramp Construction	3		1	EA			\$ 3,000	x	3	\$ 3,000
2288	W Chestnut	S 7th Terminus	S 5th	LT	Ramp	Missing	2	3	0	0	15	Ramp Construction	3		1	EA			\$ 3,000	x	3	\$ 3,000
2289	W Chestnut				Ramp	Missing	3	2	2	1	25	Ramp Construction	1		1	EA			\$ 4,000	x	1	\$ 4,000
2289	W Chestnut				Ramp	Missing	3	3	0	0	21	Ramp Construction	2		1	EA			\$ 3,000	x	2	\$ 3,000

City of LaFollette Transition Plan - November 2018  
Right of Way Compliance Decision Matrix

Location							Severity					Correction Estimate										
ID	Segment / Building	From	To	Side	Type	Deficiency	Priority Factors (Scale 0 to 3)					Correction Estimate										
							Barrier	Citizen Request	Constructability	Proximity	Pedestrian Route	Evaluation Score	Corrective Action	Evaluation Ranking	Adjusted Ranking (Optional)	Qty	Unit	Misc Structural Cost	Misc Item	Correction Estimate	Selected	Assigned Priority
2290	Depot	W Central	Terminus	LT	Ramp	Non-Compliant	3	1	2	1	24	Ramp Construction	1		1	EA			\$ 3,000	x	1	\$ 3,000
2291	Depot	W Central	S 5th	RT	Ramp	Non-Compliant	2	3	2	1	20	Ramp Construction	2		1	EA			\$ 3,000	x	2	\$ 3,000
2292	S Tennessee	W Chestnut	W Elm	LT	Ramp	Missing	2	3	2	2	21	Ramp Construction	2		1	EA			\$ 3,000	x	2	\$ 3,000
2293	E Elm				Ramp	Missing	2	3	2	0	19	Ramp Construction	2		1	EA			\$ 3,000	x	2	\$ 3,000
2293	E Elm				Ramp	Missing	3	2	2	0	24	Ramp Construction	1		1	EA			\$ 4,000	x	1	\$ 4,000
2294	W Elm	S 5th	S Tennessee	LT	Ramp	Non-Compliant	2	3	2	1	20	Ramp Construction	2		1	EA			\$ 3,000	x	2	\$ 3,000
2295	S Tennessee	W Elm	W Fir	LT	Ramp	Non-Compliant	1	3	2	2	15	Ramp Construction	3		1	EA			\$ 3,000	x	3	\$ 3,000
2296	S Tennessee	W Elm	W Fir	RT	Ramp	Non-Compliant	1	3	2	2	15	Ramp Construction	3		1	EA			\$ 3,000	x	3	\$ 3,000
2297	S Tennessee	W Elm	W Fir	LT	Ramp	Non-Compliant	1	3	2	2	15	Ramp Construction	3		1	EA			\$ 3,000	x	3	\$ 3,000
2298	S Tennessee	W Elm	W Fir	RT	Ramp	Non-Compliant	1	3	2	2	15	Ramp Construction	3		1	EA			\$ 3,000	x	3	\$ 3,000
2299	W Fir	S 5th	S Tennessee	RT	Ramp	Non-Compliant	2	3	2	1	20	Ramp Construction	2		1	EA			\$ 3,000	x	2	\$ 3,000
2300	W Fir	S 5th	S Tennessee	LT	Ramp	Non-Compliant	1	3	2	1	14	Ramp Construction	3		1	EA			\$ 3,000	x	3	\$ 3,000
2301	S 5th	W Chestnut	W Elm	RT	Ramp	Missing	2	3	0	1	16	Ramp Construction	3		1	EA			\$ 3,000	x	3	\$ 3,000
2302	W Elm	S 5th	S Tennessee	LT	Ramp	Non-Compliant	2	3	2	1	20	Ramp Construction	2		1	EA			\$ 3,000	x	2	\$ 3,000
2303	W Elm				Ramp	Missing	2	3	2	1	20	Ramp Construction	2		1	EA			\$ 3,000	x	2	\$ 3,000
2303	W Elm				Ramp	Missing	3	2	1	1	23	Ramp Construction	1		1	EA			\$ 4,000	x	1	\$ 4,000
2304	W Central	N 27th	N 25th	LT	Ramp	Missing	2	2	2	2	20	Ramp Construction	2		1	EA			\$ 3,000	x	2	\$ 3,000
2305	Jacksboro Pike				Ramp	Missing	3	2	3	2	28	Ramp Construction	1		1	EA			\$ 3,000	x	1	\$ 3,000
2305	Old Jacksboro				Ramp	Missing	3	1	3	3	28	Ramp Construction	1		1	EA			\$ 4,000	x	1	\$ 4,000
2306	Jacksboro Pike				Ramp	Missing	3	1	3	3	28	Ramp Construction	1		1	EA			\$ 4,000	x	1	\$ 4,000
2306	Old Jacksboro				Ramp	Missing	3	2	3	2	28	Ramp Construction	1		1	EA			\$ 3,000	x	1	\$ 3,000
2307	Jacksboro Pike				Ramp	Missing	3	1	2	1	24	Ramp Construction	1		1	EA			\$ 3,000	x	1	\$ 3,000
2307	Jacksboro Pike				Ramp	Missing	3	2	2	3	27	Ramp Construction	1		1	EA			\$ 4,000	x	1	\$ 4,000
2308	Jacksboro Pike				Ramp	Missing	3	1	2	1	24	Ramp Construction	1		1	EA			\$ 3,000	x	1	\$ 3,000
2308	Jacksboro Pike				Ramp	Missing	3	3	2	0	25	Ramp Construction	1		1	EA			\$ 4,000	x	1	\$ 4,000
2309	W Beech	Terminus	S 17th	LT	Ramp	Non-Compliant	2	3	1	1	18	Ramp Construction	2		1	EA			\$ 3,000	x	2	\$ 3,000
2310	S 17th				Ramp	Missing	2	0	2	0	16	Ramp Construction	3		1	EA			\$ 3,000	x	3	\$ 3,000
2310	W Beech				Ramp	Missing	3	3	1	0	23	Ramp Construction	1		1	EA			\$ 4,000	x	1	\$ 4,000
2311	S 17th				Ramp	Missing	2	0	2	0	16	Ramp Construction	3		1	EA			\$ 3,000	x	3	\$ 3,000
2311	W Beech				Ramp	Missing	3	3	1	0	23	Ramp Construction	1		1	EA			\$ 4,000	x	1	\$ 4,000
2312	W Beech	S 17th	Rich	LT	Ramp	Non-Compliant	2	2	1	1	17	Ramp Construction	3		1	EA			\$ 3,000	x	3	\$ 3,000
2313	W Beech				Ramp	Missing	2	1	1	1	16	Ramp Construction	3		1	EA			\$ 3,000	x	3	\$ 3,000
2313	W Beech				Ramp	Missing	3	2	2	2	26	Ramp Construction	1		1	EA			\$ 4,000	x	1	\$ 4,000
2314	S 13th	W Central	W Beech	RT	Ramp	Missing	3	1	2	1	24	Ramp Construction	1		1	EA			\$ 3,000	x	1	\$ 3,000
2315	W Central	S 11th	S 9th	RT	Ramp	Missing	0	2	3	3	11	Ramp Construction	4		1	EA			\$ 3,000	x	4	\$ 3,000
2316	W Beech	S 13th	S 11th	LT	Ramp	Non-Compliant	3	2	1	1	23	Ramp Construction	1		1	EA			\$ 3,000	x	1	\$ 3,000
2317	W Beech	S 11th	S 9th	LT	Ramp	Non-Compliant	3	2	1	1	23	Ramp Construction	1		1	EA			\$ 3,000	x	1	\$ 3,000
2318	W Beech				Ramp	Missing	3	3	3	1	28	Ramp Construction	1		1	EA			\$ 3,000	x	1	\$ 3,000
2318	W Beech				Ramp	Missing	3	3	3	2	29	Ramp Construction	1		1	EA			\$ 4,000	x	1	\$ 4,000
2319	N 7th				Ramp	Missing	1	3	2	0	13	Ramp Construction	3		1	EA			\$ 3,000	x	3	\$ 3,000
2319	N 7th				Ramp	Missing	3	3	2	0	25	Ramp Construction	1		1	EA			\$ 4,000	x	1	\$ 4,000
2320	W Walden	N 9th	N 7th	LT	Ramp	Missing	3	1	1	1	22	Ramp Construction	1		1	EA			\$ 3,000	x	1	\$ 3,000
2321	W Walden	N 7th	N 5th	LT	Ramp	Missing	3	1	1	1	22	Ramp Construction	1		1	EA			\$ 3,000	x	1	\$ 3,000
2322	N 5th	W Central	W Walden	LT	Ramp	Missing	0	2	1	1	5	Ramp Construction	4		1	EA			\$ 3,000	x	4	\$ 3,000
2323	N 5th				Ramp	Missing	0	2	1	1	5	Ramp Construction	4		1	EA			\$ 3,000	x	4	\$ 3,000
2323	N 5th				Ramp	Missing	3	3	2	1	26	Ramp Construction	1		1	EA			\$ 4,000	x	1	\$ 4,000
2324	Nevada				Ramp	Missing	0	2	1	1	5	Ramp Construction	4		1	EA			\$ 3,000	x	4	\$ 3,000
2324	Nevada				Ramp	Missing	3	2	2	1	25	Ramp Construction	1		1	EA			\$ 4,000	x	1	\$ 4,000

City of LaFollette Transition Plan - November 2018  
Right of Way Compliance Decision Matrix

Location							Severity					Correction Estimate											
ID	Segment / Building	From	To	Side	Type	Deficiency	Priority Factors (Scale 0 to 3)					Correction Estimate											
							Barrier	Citizen Request	Constructability	Proximity	Pedestrian Route	Evaluation Score	Corrective Action	Evaluation Ranking	Adjusted Ranking (Optional)	Qty	Unit	Misc Structural Cost	Misc Item	Correction Estimate	Selected	Assigned Priority	Selected Total
2325	Nevada				Ramp	Missing	0		2	1	1	5	Ramp Construction	4		1	EA			\$ 3,000	x	4	\$ 3,000
2325	Nevada				Ramp	Missing	3		2	2	1	25	Ramp Construction	1		1	EA			\$ 4,000	x	1	\$ 4,000
2326	N Tennessee				Ramp	Missing	3		2	1	1	23	Ramp Construction	1		1	EA			\$ 3,000	x	1	\$ 3,000
2326	N Tennessee				Ramp	Missing	3		2	2	3	27	Ramp Construction	1		1	EA			\$ 4,000	x	1	\$ 4,000
2327	N Tennessee	W Central	Mill	LT	Ramp	Missing	3		2	1	1	23	Ramp Construction	1		1	EA			\$ 3,000	x	1	\$ 3,000
2328	Mill	N Tennessee	N 1st	LT	Ramp	Missing	3		2	1	1	23	Ramp Construction	1		1	EA			\$ 3,000	x	1	\$ 3,000
2329	Mill	N Tennessee	N 1st	RT	Ramp	Missing	3		2	1	1	23	Ramp Construction	1		1	EA			\$ 3,000	x	1	\$ 3,000
2330	Mill	N Tennessee	N 1st	RT	Ramp	Missing	3		2	1	1	23	Ramp Construction	1		1	EA			\$ 3,000	x	1	\$ 3,000
2331	Mill	N Tennessee	N 1st	LT	Ramp	Missing	3		2	1	1	23	Ramp Construction	1		1	EA			\$ 3,000	x	1	\$ 3,000
2332	Mill	N Tennessee	N 1st	LT	Ramp	Missing	3		2	1	1	23	Ramp Construction	1		1	EA			\$ 3,000	x	1	\$ 3,000
2333	N Tennessee	Mill	Terminus	RT	Ramp	Missing	3		2	1	1	23	Ramp Construction	1		1	EA			\$ 3,000	x	1	\$ 3,000
2334	N Tennessee	Mill	Terminus	RT	Ramp	Missing	3		2	1	1	23	Ramp Construction	1		1	EA			\$ 3,000	x	1	\$ 3,000
2335	N Tennessee	Mill	Terminus	RT	Ramp	Missing	3		2	1	1	23	Ramp Construction	1		1	EA			\$ 3,000	x	1	\$ 3,000
2336	N 1st	Mill	Aspen	RT	Ramp	Missing	3		2	1	1	23	Ramp Construction	1		1	EA			\$ 3,000	x	1	\$ 3,000
2337	N Indiana	E Prospect	E Forrest	RT	Ramp	Non-Compliant	2		2	0	2	16	Ramp Construction	3		1	EA			\$ 3,000	x	3	\$ 3,000
2338	N Indiana	E Forrest	E Mountain	RT	Ramp	Missing	3		2	0	2	22	Ramp Construction	1		1	EA			\$ 3,000	x	1	\$ 3,000
2339	N Indiana	E Mountain	550 N Indiana	RT	Ramp	Missing	3		2	0	2	22	Ramp Construction	1		1	EA			\$ 3,000	x	1	\$ 3,000
2340	N Indiana	E Mountain	550 N Indiana	RT	Ramp	Missing	3		2	0	2	22	Ramp Construction	1		1	EA			\$ 3,000	x	1	\$ 3,000
2341	E Walden	N Indiana	N 4th	RT	Ramp	Missing	3		1	1	1	22	Ramp Construction	1		1	EA			\$ 3,000	x	1	\$ 3,000
2342	E Walden	N Indiana	N 4th	LT	Ramp	Missing	2		2	1	1	17	Ramp Construction	3		1	EA			\$ 3,000	x	3	\$ 3,000
2343	E Walden	N 4th	N 6th (mid block)	RT	Ramp	Missing	3		1	1	1	22	Ramp Construction	1		1	EA			\$ 3,000	x	1	\$ 3,000
2344	E Walden	N 4th	N 6th	LT	Ramp	Missing	2		2	1	1	17	Ramp Construction	3		1	EA			\$ 3,000	x	3	\$ 3,000
2345	E Walden	N 4th	N 6th (mid block)	RT	Ramp	Missing	3		1	1	1	22	Ramp Construction	1		1	EA			\$ 3,000	x	1	\$ 3,000
2346	E Walden	N 4th	N 6th	LT	Ramp	Missing	2		2	1	1	17	Ramp Construction	3		1	EA			\$ 3,000	x	3	\$ 3,000
2347	E Prospect				Ramp	Missing	3		3	1	1	24	Ramp Construction	1		1	EA			\$ 4,000	x	1	\$ 4,000
2348	E Prospect	N Indiana	N 4th	RT	Ramp	Missing	2		2	0	1	15	Ramp Construction	3		1	EA			\$ 3,000	x	3	\$ 3,000
2349	E Prospect	N 4th	N 6th	RT	Ramp	Missing	2		2	0	1	15	Ramp Construction	3		1	EA			\$ 3,000	x	3	\$ 3,000
2350	N 4th				Ramp	Missing	3		3	1	1	24	Ramp Construction	1		1	EA			\$ 4,000	x	1	\$ 4,000
2351	E Prospect	N 4th	N 6th	RT	Ramp	Missing	2		2	0	1	15	Ramp Construction	3		1	EA			\$ 3,000	x	3	\$ 3,000
2352	E Prospect				Ramp	Missing	3		3	1	1	24	Ramp Construction	1		1	EA			\$ 4,000	x	1	\$ 4,000
2353	E Prospect	N 6th	N8th	RT	Ramp	Missing	2		2	0	1	15	Ramp Construction	3		1	EA			\$ 3,000	x	3	\$ 3,000
2354	E Prospect				Ramp	Missing	2		2	0	1	15	Ramp Construction	3		1	EA			\$ 3,000	x	3	\$ 3,000
2355	E Prospect	N 6th	N8th	RT	Ramp	Missing	2		2	0	1	15	Ramp Construction	3		1	EA			\$ 3,000	x	3	\$ 3,000
2356	E Hemlock	S Indiana	S 4th	LT	Ramp	Non-Compliant	3		3	2	1	26	Ramp Construction	1		1	EA			\$ 3,000	x	1	\$ 3,000
2357	E Hemlock	S Indiana	S 4th	LT	Ramp	Non-Compliant	3		3	2	1	26	Ramp Construction	1		1	EA			\$ 3,000	x	1	\$ 3,000
2358	E Hemlock	S 12th	Terminus	LT	Ramp	Missing	3		1	1	1	22	Ramp Construction	1		1	EA			\$ 3,000	x	1	\$ 3,000
2359	E Kentucky	S 4th	Circle Drive	RT	Ramp	Non-Compliant	2		3	1	1	18	Ramp Construction	2		1	EA			\$ 3,000	x	2	\$ 3,000
2360	Foot Hills	E Central	Terminus	LT	Ramp	Non-Compliant	1		3	2	1	14	Ramp Construction	3		1	EA			\$ 3,000	x	3	\$ 3,000
2361	N 1st	W Central	Mill	RT	Ramp	Non-Compliant	2		2	2	1	19	Ramp Construction	2		1	EA			\$ 3,000	x	2	\$ 3,000
2362	N Indiana	E Central	Mid Block	LT	Ramp	Cross Slope	3		2	3	2	28	Ramp Construction	1		1	EA	\$ 1,500	Remove Sidewalk (5'x100')	\$ 4,500	x	1	\$ 4,500
2363	N Indiana	E Prospect	E Forrest	RT	Ramp	Non-Compliant	2		2	0	2	16	Ramp Construction	3		1	EA			\$ 3,000	x	3	\$ 3,000
2364	River Dr	E Beech	E Chestnut	LT	Ramp	Non-Compliant	3		2	1	0	22	Ramp Construction	1		1	EA			\$ 3,000	x	1	\$ 3,000
2365	River Dr	E Elm	Terminus	LT	Ramp	Non-Compliant	2		3	1	0	17	Ramp Construction	3		1	EA			\$ 3,000	x	3	\$ 3,000
2366	S 4th	E Hemlock	Sharp	LT	Ramp	Missing	3		3	0	1	22	Ramp Construction	1		1	EA			\$ 3,000	x	1	\$ 3,000
2367	S 4th	E Hemlock	Sharp	LT	Ramp	Missing	3		3	0	1	22	Ramp Construction	1		1	EA			\$ 3,000	x	1	\$ 3,000
2368	S Indiana	E Central	E Beech	RT	Ramp	Non-Compliant	1		2	3	2	16	Ramp Construction	3		1	EA			\$ 3,000	x	3	\$ 3,000
2369	S Indiana	E Central	E Beech	RT	Ramp	Non-Compliant	1		2	3	2	16	Ramp Construction	3		1	EA			\$ 3,000	x	3	\$ 3,000



City of LaFollette Transition Plan - November 2018  
Right of Way Compliance Decision Matrix

Location							Severity						Correction Estimate											
ID	Segment / Building	From	To	Side	Type	Deficiency	Priority Factors (Scale 0 to 3)						Correction Estimate											
							Barrier	Citizen Request	Constructability	Proximity	Pedestrian Route	Evaluation Score	Corrective Action	Evaluation Ranking	Adjusted Ranking (Optional)	Qty	Unit	Misc Structural Cost	Misc Item	Correction Estimate	Selected	Assigned Priority	Selected Total	
2370	S Indiana	E Central	E Beech	RT	Ramp	Non-Compliant	1		2	3	2	16	Ramp Construction	3		1	EA			\$ 3,000	x	3	\$ 3,000	
2371	S Indiana	E Central	E Beech	RT	Ramp	Non-Compliant	1		2	3	2	16	Ramp Construction	3		1	EA			\$ 3,000	x	3	\$ 3,000	
2372	S Indiana	E Central	E Beech	LT	Ramp	Non-Compliant	1		2	3	2	16	Ramp Construction	3		1	EA			\$ 3,000	x	3	\$ 3,000	
2373	S Indiana	E Central	E Beech	LT	Ramp	Non-Compliant	1		2	3	2	16	Ramp Construction	3		1	EA			\$ 3,000	x	3	\$ 3,000	
2374	S Tennessee	W Beech	W Chestnut	RT	Ramp	Missing	3		1	2	2	25	Ramp Construction	1		1	EA			\$ 3,000	x	1	\$ 3,000	
2375	W Central	Rich	S 13th	RT	Ramp	Non-Compliant	0		2	3	3	11	Ramp Construction	4		1	EA			\$ 3,000	x	4	\$ 3,000	
2376	W Chestnut				Ramp	Missing	3		3	0	0	21	Ramp Construction	2		1	EA			\$ 3,000	x	2	\$ 3,000	
2377	Jacksboro Pike				Ramp	Compliant						0		4		1	#				x	4		
2378	Jacksboro Pike				Ramp	Compliant						0		4		1	#					x	4	
2379	W Elm				Ramp	Missing	3		2	2	1	25	Ramp Construction	1		1	EA			\$ 3,000	x	1	\$ 3,000	
2380	S 5th				Ramp	Missing	3		2	2	1	25		1		1	#					x	1	

City of LaFollette Facilities

Facility	Priority Level				Facility Total
	1	2	3	4	
Dr. Lee J Sergeant Park	\$ -	\$ -	\$ 3,475	\$ 150	\$ 3,625
East End Community Center	\$ 19,500	\$ -	\$ -	\$ -	\$ 19,500
Fire Station 1	\$ 3,750	\$ -	\$ -	\$ -	\$ 3,750
Fire Station 2	\$ 2,625	\$ -	\$ -	\$ -	\$ 2,625
Fire Station 3	\$ 4,125	\$ -	\$ -	\$ -	\$ 4,125
LaFollette Public Library	\$ 12,950	\$ 3,150	\$ -	\$ -	\$ 16,100
Library	\$ -	\$ -	\$ 2,825	\$ -	\$ 2,825
Lonas Young Park	\$ 10,500	\$ -	\$ 2,350	\$ 750	\$ 13,600
Municipal Building	\$ 13,600	\$ 3,750	\$ -	\$ -	\$ 17,350
Municipal Building and Library	\$ 27,475	\$ -	\$ -	\$ -	\$ 27,475
Municipal Services and City Hall	\$ -	\$ 10,225	\$ 14,650	\$ -	\$ 24,875
Police Department	\$ 16,500	\$ -	\$ -	\$ -	\$ 16,500
Post Office (former)	\$ 2,650	\$ -	\$ -	\$ -	\$ 2,650
Public Works	\$ 30,000	\$ 3,000	\$ 3,100	\$ 1,500	\$ 37,600
Recreation Center	\$ -	\$ -	\$ 6,200	\$ 75	\$ 6,275
Skate Park/Liberty Park	\$ -	\$ -	\$ 14,250	\$ -	\$ 14,250
Valley View Head Start	\$ 950	\$ 100	\$ 9,850	\$ -	\$ 10,900
Veterans Association	\$ 12,750	\$ -	\$ -	\$ -	\$ 12,750
West End Community Center	\$ 16,700	\$ 9,750	\$ -	\$ -	\$ 26,450
West LaFollette Head Start	\$ 10,500	\$ 750	\$ 4,675	\$ -	\$ 15,925
Priority Total	\$ 184,575	\$ 30,725	\$ 61,375	\$ 2,475	\$ 279,150

ID	Facility	Location	Priority	Deficiency	Notes	Correction	Severity	Cost / Each	Multiplier	Cost
	East End Community Center	Parking Lot	1	ADA Parking Spaces	Add accessible spaces with proper dimensions, grades, markings, and signage	Pavement	High	\$ 15,000	1	\$ 15,000
	East End Community Center	Entry Route	1	Cross Slope	Excessive Cross slope	Sidewalk	Low	\$ 1,500	1	\$ 1,500
	East End Community Center	Main Entrance	1	Accessible Entrance	Need accessible hardware, routing signage, entrance signage, improve threshold, and securely attach carpet to floor.	Entry Construction	High	\$ 3,000	1	\$ 3,000
	Dr. Lee J Sergeant Park	Restroom	3	Restroom Signage	Provide proper signage (raised letters, and in braille, on the wall beside the door latch.	Signage	Low	\$ 100	1	\$ 100
	Dr. Lee J Sergeant Park	Restroom	3	Restroom Door	Replace door hardware at the proper height (34" to 48").	Equipment	Medium	\$ 1,500	1	\$ 1,500
	Dr. Lee J Sergeant Park	Restroom	3	Restroom Sink	Provide proper toe clearance and protect pipes from contact.	Hardware	Low	\$ 150	1	\$ 150
	Dr. Lee J Sergeant Park	Restroom	3	Toilet	Correct toilet placement to proper distance from the side wall or partition and correct the height of the toilet to between 17" to 19".	Equipment	Medium	\$ 1,500	1	\$ 1,500
	Dr. Lee J Sergeant Park	Restroom	3	Grab Bar	Install compliant grab bar.	Hardware	Low	\$ 150	1	\$ 150
	Dr. Lee J Sergeant Park	Restroom	3	Toilet Paper Dispenser	Mount toilet paper dispenser at proper height and placement.	Relocate Items	Low	\$ 75	1	\$ 75
	Dr. Lee J Sergeant Park	Restroom	4	Drinking Fountain	Provide proper clear space in front of the water fountain.	Relocate Items	Medium	\$ 150	1	\$ 150
	Municipal Building and Library	Parking Lot	1	Grades	Provide a slope of less than 1:48 for parking spaces and access aisles.	Pavement	High	\$ 15,000	1	\$ 15,000
	Municipal Building and Library	Parking Lot	1	Parking Signage	ADA parking signage should be mount atleast 60" above the ground.	Signage	Low	\$ 100	1	\$ 100
	Municipal Building and Library	Parking Lot	1	Grades	Cross slope of grate crossing should be 1:48 or less.	Equipment	High	\$ 3,000	1	\$ 3,000
	Municipal Building and Library	Parking Lot	1	Grades	Curb ramps should have a running slope of 1:12 or less, flares of 1:12 or less, and cross slope of 1:48 or less.	Ramps	High	\$ 6,000	1	\$ 6,000
	Municipal Building and Library	Main Entrance	1	Grades	Grades at this location should be 1:48 or less.	Sidewalk	Medium	\$ 3,000	1	\$ 3,000
	Municipal Building and Library	Main Entrance	1	Door Closure	Door closers should take atleast 5 seconds to close from 90 degrees.	Hardware	Medium	\$ 375	1	\$ 375
	Municipal Services and City Hall	Interior Route	2	Signs	Signs need to be raised letter and in braille mounted on the latch side of the door and mounted at proper heights.	Signage	Low	\$ 100	1	\$ 100
	Municipal Services and City Hall	Interior Doors	2	Door Handles	All door handles need to use accessible hardware.	Hardware	High	\$ 750	1	\$ 750
	Municipal Services and City Hall	Interior Doors	2	Door Closure	Door closers should take atleast 5 seconds to close from 90 degrees.	Hardware	Medium	\$ 375	1	\$ 375
	Municipal Services and City Hall	Assembly Room	2	Adequate wheel chair spaces	Provide adequate wheel chair spaces with visibility while others are standing. Provide atleast one companion seat per wheelchair space.	Interior Construction	Low	\$ 3,000	1	\$ 3,000
	Municipal Services and City Hall	Service Counters	2	Counter Heights	Counter height should be not higher than 36".	Interior Construction	Medium	\$ 6,000	1	\$ 6,000
	Municipal Services and City Hall	Restroom	3	Signs	Provide proper signage for accessible bathrooms. Signs need to be raised letter and in braille mounted on the latch side of the door and mounted at proper heights.	Signage	Low	\$ 100	1	\$ 100
	Municipal Services and City Hall	Restroom	3	Doors	Doors should provide atleast a 32" clearing when open 90 degrees. Door lock should be accessible. Door should open with 5 lbs maximum force.	Entry Construction	Medium	\$ 1,500	1	\$ 1,500
	Municipal Services and City Hall	Restroom	3	Clear Space	ADA bathrooms should have a 60" diameter of clear zone (or T-shape within a 60" square).	Restroom Remodel	Medium	\$ 3,000	1	\$ 3,000
	Municipal Services and City Hall	Restroom	3	Mirror	Atleast one mirror should be mounted no higher than 40 inches.	Hardware	High	\$ 750	1	\$ 750
	Municipal Services and City Hall	Restroom	3	Lavatory Clearance	Lavatory should have atleast 27" clearance form the floor that extends atleast 8" under the lavatory and insulated from contact. There should be atleast 9" of toe clearance.	Equipment	Medium	\$ 1,500	1	\$ 1,500

Municipal Services and City Hall	Restroom	3	Lavatory Faucet	Faucet activation should require no more than 5 lbs of force.	Equipment	Low	\$	750	1	\$	750
Municipal Services and City Hall	Restroom	3	Lavatory Height	Lavatory heights should be no higher than 44" above the floor.	Relocate Items	Medium	\$	150	1	\$	150
Municipal Services and City Hall	Restroom	3	Water Closet	There should be atleast 60" from the sidewall and atleast 56" from the rear wall. A 42" grab bars is required on a side wall and a 36" grab bar on the rear wall.	Restroom Remodel	High	\$	6,000	1	\$	6,000
Municipal Services and City Hall	Restroom	3	Toilet Paper Dispenser	Toilet paper dispenser no less than 7" and no greater than 9" from the front of the water closet to the centerline of the dispenser.	Hardware	Low	\$	150	1	\$	150
Municipal Services and City Hall	Restroom	3	Stall Openings	Doors should provide atleast a 32" clearing when open 90 degrees. Door should be self-closing.	Entry Construction	Low	\$	750	1	\$	750
Fire Station 1	Accessible Route	1	Route	Entrance should be accessible.	Entry Construction	Medium	\$	1,500	1	\$	1,500
Fire Station 1	Parking Lot	1	ADA Parking Spaces	Adequate number and parking stall sizes should be provided with markings and signage.	Striping	Medium	\$	750	1	\$	750
Fire Station 1	Main Entrance	1	Entry Door	Adequate clearzone is required at the main entrance. The door closer should take atleast 5 seconds to close from 90 degrees to 12 degrees from lock position. The door threshold should be no greater than 1/4".	Entry Construction	Medium	\$	1,500	1	\$	1,500
Fire Station 2	Parking Lot	1	ADA Parking Spaces	Adequate number and parking stall sizes should be provided with markings and signage.	Striping	Low	\$	375	1	\$	375
Fire Station 2	Accessible Route	1	Route	Route slope should be 1:20 and Cross slope 1:48. Signage for accessible route.	Sidewalk	Low	\$	1,500	1	\$	1,500
Fire Station 2	Main Entrance	1	Entry Door	Threshold should be 1/4" high or less. Door knobs should be able to be accessed with one hand.	Entry Construction	Low	\$	750	1	\$	750
Fire Station 3	Parking Lot	1	ADA Parking Spaces	Adequate number and parking stall sizes should be provided with markings and signage.	Striping	Low	\$	375	1	\$	375
Fire Station 3	Accessible Route	1	Route	Cross slope 1:48	Sidewalk	Medium	\$	3,000	1	\$	3,000
Fire Station 3	Main Entrance	1	Entry Door	Threshold should be 1/4" high or less. Door knobs should be able to be accessed with one hand.	Entry Construction	Low	\$	750	1	\$	750
LaFollette Public Library	Parking Lot	1	ADA Parking Spaces	Adequate number and parking stall sizes should be provided with markings and signage.	Striping	Medium	\$	750	1	\$	750
LaFollette Public Library	Accessible Route	1	Route	Route slope should be 1:20 and Cross slope 1:48. Signage for accessible route.	Sidewalk	Medium	\$	3,000	1	\$	3,000
LaFollette Public Library	Curb Ramp	1	Curb ramp	No Curb ramp	Ramps	Medium	\$	3,000	1	\$	3,000
LaFollette Public Library	Ramp	1	Ramp	Ramp should have a running slope no greater than 1:12. Hand rails on both sides, adequate height, and extend 12" beyond ramp.	Ramps	High	\$	6,000	1	\$	6,000
LaFollette Public Library	Accessible Route	1	Route	Signage. Ground Surface maneuvering clearance level no steeper than 1:48. Door closer must take atleast 5 sec to go from open (90 degrees) to closed (12 degrees).	Signage	Medium	\$	200	1	\$	200
LaFollette Public Library	Interior Route	2	Route obstructions	Items must not protrude more than 4" into path.	Relocate Items	Low	\$	75	1	\$	75
LaFollette Public Library	Seating	2	Seating	Height must be between 28" and 34" high. Must extend between 17" and 25". Knee space must be 27" and 30" wide.	Interior Construction	Low	\$	3,000	1	\$	3,000
LaFollette Public Library	Counter	2	Counter	Clear floor space under counter from 17" to 25"	Relocate Items	Low	\$	75	1	\$	75
Lonas Young Park	Parking Lot	1	Parking	Slope less than 1:48. Accessibility signage.	Pavement	Medium	\$	7,500	1	\$	7,500
Lonas Young Park	Route	1	Route	Cross slope less than 1:48	Sidewalk	Medium	\$	3,000	1	\$	3,000
Lonas Young Park	Toilet	3	Toilet signage	Signage must have raised text, braille, on the wall on the latch side of the door, Characters must be between 48" and 60".	Signage	Low	\$	100	1	\$	100
Lonas Young Park	Toilet Entrance	3	Entrance	Door must be easily opened 5lbf	Entry Construction	Medium	\$	1,500	1	\$	1,500
Lonas Young Park	Toilet	3	toilet	Flush control valve on the open side of toilet, toilet paper dispenser must be between 7" and 9".	Equipment	Low	\$	750	1	\$	750
Lonas Young Park	Drinking Fountain	4	Drinking Fountain	Forward approach between 17" and 25", spout outlet less than 36", bottom edge of fountain more than 28" high.	Equipment	Low	\$	750	1	\$	750

Municipal Building	Parking Lot	1	Parking	More accessible spaces, add van space, space width and aisle width, signage, slope no more than 1:48, closest route for accessible spaces needs to be utilized.	Pavement	Medium	\$	7,500	1	\$	7,500
Municipal Building	Curb Ramp	1	Curb Ramp	Cross slope less than 1:48,	Reconstruct Ramps	Medium	\$	3,000	1	\$	3,000
Municipal Building	Route	1	Route ramp	Running slope no greater than 1:12, handrails on both sides with correct height	Sidewalk	Medium	\$	3,000	1	\$	3,000
Municipal Building	Entrance	1	Entrance	Signage, door must take atleast 5 sec to close.	Signage	Low	\$	100	1	\$	100
Municipal Building	Interior doors	2	Interior doors	Atleast 18" of maneuvering clearance, door must easily be opened, door must take 5 sec to close.	Entry Construction	Low	\$	750	1	\$	750
Municipal Building	Service Counters	2	Counter	No higher than 36",	Interior Construction	Low	\$	3,000	1	\$	3,000
Police Department	Parking Lot	1	parking	Stairless route, number of accessible spaces	Pavement	Medium	\$	7,500	1	\$	7,500
Police Department	Route	1	ramp	Running slope no greater than 1:12, handrails on both sides with correct height, direction change must be the size 60"x60", Rails must extend atleast 12" beyond top and bottom.	Ramps	High	\$	6,000	1	\$	6,000
Police Department	Entrance	1	Entrance	Entrance should be accessible, or alternate accessible entrance, signage, 18" of maneuvering clearance, door must take 5 sec to close.	Entry Construction	High	\$	3,000	1	\$	3,000
Post Office (former)	Parking Lot	1	Parking	Van accessible space, spaces marked, slope less than 1:48	Striping	Medium	\$	750	1	\$	750
Post Office (former)	Route	1	Ramp	Slope less than 1:12, ramp must extend 12" beyond inside face of rail	Ramps	Low	\$	1,500	1	\$	1,500
Post Office (former)	Entrance	1	Entrance	Signage, threshold less than 1/4" high	Signage	High	\$	400	1	\$	400
Public Works	Parking Lot	1	parking	Add accessible spaces with proper dimensions, grades, markings, and signage	Pavement	High	\$	15,000	1	\$	15,000
Public Works	Route	1	Route	Slope less 1:20, cross slope 1:48	Sidewalk	High	\$	6,000	1	\$	6,000
Public Works	Ramp	1	Ramp	Slope less than 1:12, Hand rails on both sides at appropiate height, ramp must extend 12" beyond inside face of rail	Ramps	High	\$	6,000	1	\$	6,000
Public Works	Entrance	1	Entrance	Atleast 18" of maneuvering clearance, door must take 5 sec to close.	Entry Construction	High	\$	3,000	1	\$	3,000
Public Works	Service Counters	2	Service Counters	Height must be atleast 36"	Interior Construction	Low	\$	3,000	1	\$	3,000
Public Works	Toilet	3	Toilet	Signage	Signage	Low	\$	100	1	\$	100
Public Works	Restroom	3	Bathroom	Toilet and sink Must be Wheelchair Accessible, facuet must be easy to operate, soap dispenser must be lower than 48"	Restroom Remodel	Low	\$	1,500	1	\$	1,500
Public Works	Restroom	3	Stalls	Centerline of Stall needs to be between 16" and 18" from wall. Grab bar at correct height and distance from back wall. Toilet paper dispenser must be between 7" to 9" from the front of the stall.	Restroom Remodel	Low	\$	1,500	1	\$	1,500
Public Works	Drinking Fountain	4	Drinking Fountain	Spout no higher than 36" from floor, fire alarms with flashing lights and sound.	Equipment	Medium	\$	1,500	1	\$	1,500
Skate Park/Liberty Park	Restroom	3	Bathroom	Add accessible bathroom, signage containing raised characters, braille, placed on the latch side of the door, lettering must be between 48" and 60"	Restroom Remodel	High	\$	6,000	1	\$	6,000
Skate Park/Liberty Park	Entrance	3	Entrance	Threshold should be 1/4" high or less.	Entry Construction	Low	\$	750	1	\$	750
Skate Park/Liberty Park	Restroom	3	Bathroom	Pipes below sink should be insulated or protected to prevent contact, Faucet operated easily, sink no higher than 48". Soap dispensers no higher than 48", towel drier needs to be operated easily,.	Restroom Remodel	Low	\$	1,500	1	\$	1,500

Skate Park/Liberty Park	Restroom	3	Toilet	Stall must be atleast 56" from rear wall, and 60" from side wall. Toilet height to be between 17" to 19", grab bar to extend atleast 54" from rear wall, grab bar atleast 36" along rear wall. Flush control valve should be on the open side of toilet, 18" of maneuvering clearance, self closing door, door opens without twisting, lock operatable with one hand, Stall width atleast 60"	Restroom Remodel	High	\$	6,000	1	\$	6,000
Veterans Association	Parking Lot	1	parking	Aisle doesn't adjoin an accessible route	Pavement	Low	\$	3,750	1	\$	3,750
Veterans Association	Route	1	Route	Cross slope less than 1:48	Sidewalk	Medium	\$	3,000	1	\$	3,000
Veterans Association	Curb ramp	1	Curb Ramp	Add curb ramp	Ramps	Medium	\$	3,000	1	\$	3,000
Veterans Association	Entrance	1	Entrance	Two doors must have atleast 48" distance between doors plus length of doors	Entry Construction	High	\$	3,000	1	\$	3,000
Valley View Head Start	Parking Lot	1	Parking	Add van accessible space, aisles need markings, space slope less than 1:48, Bottom of sign to be higher than 60" above ground.	Striping	Medium	\$	750	1	\$	750
Valley View Head Start	Entrance	1	Entrance	Signage, threshold less than 1/4" high	Signage	Medium	\$	200	1	\$	200
Valley View Head Start	Interior signage	2	Signs	Signs need to be raised letter and in braille mounted on the latch side of the door and mounted at proper heights.	Signage	Low	\$	100	1	\$	100
Valley View Head Start	Toilet Signs	3	Signs	Signs need to be raised letter and in braille mounted on the latch side of the door and mounted at proper heights.	Signage	Low	\$	100	1	\$	100
Valley View Head Start	Toilet Entrance	3	Entrance	Threshold less than 1/4"	Entry Construction	Low	\$	750	1	\$	750
Valley View Head Start	Restroom	3	Toilet	Make Wheel Chair accessible	Restroom Remodel	Medium	\$	3,000	1	\$	3,000
Valley View Head Start	Restroom	3	Sink	Clear floor space for approach atleast 30" wide and 48" long. Clear floor space under sink 17" to 25". Sink is atleast 27" clearance above floor that extends atleast 8". Toe Clearance atleast 9" high, faucet must be operable without twisting	Restroom Remodel	Medium	\$	3,000	1	\$	3,000
Valley View Head Start	Restroom	3	Bathroom	Centerline of toilet between 16" and 18" from side wall, must be atleast 56" from rear wall, and 60" from side wall. Toilet height to be between 17" to 19", grab bar extends atleast 54" from rear wall, grab bar atleast 42" along side wall, grab bar atleast 36" along rear wall, grab bar extend atleast 24" on open side, 12" of clearance between bar and other mounted objects, Flush control valve should be on the open side of toilet	Restroom Remodel	Medium	\$	3,000	1	\$	3,000
West End Community Center	Parking Lot	1	Parking	Add accessible spaces with proper dimensions, grades, markings, and signage.	Pavement	Medium	\$	7,500	1	\$	7,500
West End Community Center	Route	1	Route	Cross Slope no greater than 1:48	Sidewalk	Medium	\$	3,000	1	\$	3,000
West End Community Center	Curb Ramp	1	Curb ramp	Slope no greater than 1:12, add level landing at top of ramp	Ramps	Medium	\$	3,000	1	\$	3,000
West End Community Center	Ramp	1	Ramp	Running slope 1:12 not met at top	Ramps	Medium	\$	3,000	1	\$	3,000
West End Community Center	Entrance	1	Entrance	Signage, ground surface level on both sides of door to be less than 1:48 slope.	Signage	Medium	\$	200	1	\$	200
West End Community Center	Interior	2	Interior route	Slope less than 1:20 slope, cross slope less than 1:48, objects extending into pathway must protrude less than 4". Protruding object bottom edge must be lower than 27" above floor.	Interior Construction	Low	\$	3,000	1	\$	3,000
West End Community Center	Interior Ramps	2	Ramp	running slope no more than 1:12, add level landings atleast 60" long and as wide as ramp at top and bottom, hand rails on both sides with correct dimensions.	Ramps	Medium	\$	3,000	1	\$	3,000
West End Community Center	Interior doors	2	Interior doors	Door hardware that doesn't require twisting, add door handle, door must open easily, door closer must take atleast 5 sec to close.	Hardware	Medium	\$	375	1	\$	375

West End Community Center	Controls	2	Controls	Operable parts no higher than 48" from floor.	Hardware	Medium	\$	375	1	\$	375
West End Community Center	Seating	2	Seating	Clear space must extend between 17" and 25" under surface.	Interior Construction	Low	\$	3,000	1	\$	3,000
Library	Restroom	3	Signs	Add Signs with raised letter and in braille mounted on the latch side of the door and mounted at proper heights.	Signage	Medium	\$	200	1	\$	200
Library	Restroom	3	Entrance	Maneuvering clearance, easily opened door, mirror with bottom no higher than 40" above floor.	Entry Construction	Low	\$	750	1	\$	750
Library	Restroom	3	Sink	27" clearance underneath sink atleast 8" deep, toe clearance of atleast 9" high, towel dispenser without grasping, pinching, or twisting	Restroom Remodel	Low	\$	1,500	1	\$	1,500
Library	Restroom	3	Toilet	Grab bar mounted between 33" and 36" from floor, grab bar extended atleast 12" past centerline of toilet, toilet paper dispenser be between 7" to 9" from centerline of toilet	Hardware	Medium	\$	375	1	\$	375
Recreation Center	Restroom	3	Signs	Add signs to accessible toilets, Add Signs with raised letter and in braille mounted on the latch side of the door and mounted at proper heights.	Signage	Medium	\$	200	1	\$	200
Recreation Center	Restroom	3	Entrance	Door handles that don't require twisting, pinching, or grasping	Entry Construction	Low	\$	750	1	\$	750
Recreation Center	Restroom	3	Sink	Mirror bottom to be lower than 40" from floor, atleast 27" of clearance 8" deep below sink, 9" toe clearance under sink, pipes insulated or protected from contact	Restroom Remodel	Low	\$	1,500	1	\$	1,500
Recreation Center	Restroom	3	Toilet	Grab bar atleast 42" along side wall, grab bar to extend 54" from rear wall, grab bar mounted between 33" and 36" from the floor, 12" clearance between bar and other mounted objects, grab bar of 36" along rear wall, force to operate flush valve less than 5lbf, toilet paper dispenser between 7" and 9" from floor	Hardware	High	\$	750	1	\$	750
Recreation Center	Restroom	3	Stalls	Adequate maneuvering depth 60", self closing door, door handle that doesn't require twisting, grasping or pinching, lock operable with a single hand, floor mounted toilet atleast 59" deep	Restroom Remodel	Medium	\$	3,000	1	\$	3,000
Recreation Center	Drinking Fountain	4	Height	Bottom of fountain must be more than 27"	Relocate Items	Low	\$	75	1	\$	75
West LaFollette Head Start	Parking Lot	1	Parking	Add accessible spaces with proper dimensions, grades, markings, and signage	Striping	Medium	\$	750	1	\$	750
West LaFollette Head Start	Route	1	Slope	Slope must be less than 1:20	Sidewalk	Medium	\$	3,000	1	\$	3,000
West LaFollette Head Start	Curb Ramp	1	Curb Ramp	Level Landing at the top of the ramp atleast 36" long and as wide as the ramp, Curb ramp flares no steeper than 1:10	Sidewalk	Medium	\$	3,000	1	\$	3,000
West LaFollette Head Start	Ramp	1	Ramp	Atleast 36" wide with rails on both sides	Ramps	Medium	\$	3,000	1	\$	3,000
West LaFollette Head Start	Entrance	1	Entrance	Add signage, Threshold no more than 3/4" with top beveled no steeper than 1:2, door closer should take atleast 5 sec to close	Entry Construction	Low	\$	750	1	\$	750
West LaFollette Head Start	Interior doors	2	Door	Easy to open 5lbf	Entry Construction	Low	\$	750	1	\$	750
West LaFollette Head Start	Restroom	3	Signs	On wall on latch side of door, characters between 48" and 60" from floor	Signage	Low	\$	100	1	\$	100
West LaFollette Head Start	Restroom	3	Toilet	Clear path to atleast one type of fixture that is atleast 36" wide, space to turn around a wheelchair 60" T pattern	Restroom Remodel	Low	\$	1,500	1	\$	1,500
West LaFollette Head Start	Restroom	3	Sink	30"x48" of clear space for approach, 27" of clearance 8" deep under sink, 9" toe clearance	Relocate Items	Low	\$	75	1	\$	75
West LaFollette Head Start	Restroom	3	Toilet	clearance around toilet atleast 60" from the side and 56" from the rear wall, height of the toilet between 17" and 19", grab bar atleast 42" long and extends atleast 54" from the rear wall, mounted between 33" and 36" from the floor, grab bar atleast 36" along rear wall, force to flush less than 5lbf, toilet paper dispenser between 7" and 9" from the floor	Restroom Remodel	Medium	\$	3,000	1	\$	3,000

EXPLANATIONS: Severity Values, Evaluation Scores and Evaluation Ranks

- Barrier \* To what degree does a barrier exist for a PWD to use the identified segment?
- 0 Present no barrier to access
  - 1 Increased difficulty: slopes, lip heights slightly non-compliant, minor obstructions present.
  - 2 Noticeable Impedence: distinctly non-compliant characteristics make travel and/or access difficult.
  - 3 Absolute barrier: pedestrian with disability may require assistance or excessive alternative route to overcome non-compliance.
- \* *If the location is a ramp, the barrier value is doubled.*

- Citizens Request Has the segment been identified as a priority for citizens?
- Y If yes, a value of 3 is used.
  - N If no (default), the value is 0.

- Constructability How easily can the corrective action be completed?
- 0 Poor Construction would be difficult, expensive and high potential for significant R/W or utility impact.
  - 1 Fair Construction somewhat difficult. Some small R/W or utility relocation may be necessary.
  - 2 Good Construction area accessible. Working room may be limited, but final product within R/W. Small construction easement may be necessary.
  - 3 Ideal Construction area open and within existing R/W. No utility impact.

- Pedestrian Route Which roadway type? (Higher ranks indicate greater need to provide route for pedestrians so they do not use the roadway.)
- 0 Local (Cul-de-sac)
  - 1 Local (Through or Industrial)
  - 2 Collector
  - 3 Arterial

- Proximity How close is the segment to either a primary community facility or concentrated area of public commerce?
- 0 Greater than 1/2 mile and/or access to public transportation is closer.
  - 1 Less than 1/2 mile (2640 ft)
  - 2 Less than 1/4 mile (1320 ft)
  - 3 Segment provides direct access (less than 330 or "same block") OR serves as part of connecting corridor between 2 direct access segments (less than 660 ft).

Evaluation Score While all components listed above are critical to compliance, a formula is used to "weight" each component to reflect the impact to addressing accessibility needs.

Component	Multiplier
Barrier	3x
Citizens Request	2x
Constructability	1x
Pedestrian Route	1x
Proximity	2x

Evaluation Ranking The Evaluation Scores are applied to a statistical distribution formula to provide a relative grouping of all identified non-compliance issues and separate them in to Priority Areas 1 through 4.

While the Severity values, Evaluation Scores and Evaluation Rankings are great numerical guides to assist in identify areas of greatest need, they are NOT intended to replace empirical data or individual assessments made by stakeholders with personal knowledge and experience with the identified segments. People will always be the greatest source of assessment.

In recognition of this, the Decision Matrix has a built-in "over-ride" function.

Next to the Evaluation Ranking column, is a column labeled "Adjusted Ranking (Optional)"

Here, the Matrix user can specify an alternate evaluation ranking to raise or lower a segment's priority based on stakeholder's specific priorities.

The financial summary uses the last ranking column, "Assigned Priority" to summarize budget projections.

Note: Costs associated with corrective actions are for "Order of Magnitude" type project cost estimates.

There simply are too many variables to accurately estimate the cost of corrective action for such a large number of items to fall within the budget/scope of this transition plan. More specific cost estimates will need to be obtained at the time of actual construction procurement.



**APPENDIX B: SCHEDULE / BUDGET INFORMATION**  
**COST INFORMATION**

**UNIT PRICES**

Construction costs for upgrading facilities can vary depending on each individual improvement and conditions of each site. Costs can also vary on the type and size of project the improvements are associated with. Listed below are estimates of costs for some typical accessibility improvements based on if the improvements are included as part of a retrofit type project, or as part of a larger comprehensive capital improvement project.

Right-of-Way Elements

Correction	Units	Potential Cost
Bevel Sidewalk Heaves	Linear Foot of Sidewalk	\$5
Cross-Slope Repair	Linear Foot	\$325
Detectable Warnings	Square foot	\$40
Entrance/Ramp Slope Modification	Each	\$2,500
Misc. Structural	Lump Sum	Varies
Obstruction Bypass	Each	\$10,000
Ramp Construction	Each	\$3,000
Running-Slope Modification	Each	\$20,000
Sidewalk Construction	Linear Foot	\$56
Sidewalk Widening	Linear Foot	\$34

Facility Elements

Correction	Units	Low Cost	Medium Cost	High Cost
Entry Construction	Each	\$750	\$1,500	\$3,000
Equipment	Each	\$750	\$1,500	\$3,000
Hardware	Each	\$150	\$375	\$750
Interior Construction	Each	\$3,000	\$6,000	\$12,000
Pavement	Each	\$3,750	\$7,500	\$15,000
Ramps	Each	\$1,500	\$3,000	\$6,000
Relocate Items	Each	\$75	\$150	\$300
Restroom Remodel	Each	\$1,500	\$3,000	\$6,000
Sidewalk	Each	\$1,500	\$3,000	\$6,000
Signage	Each	\$100	\$200	\$400
Striping	Each	\$375	\$750	\$1,500

The reader should be advised that these estimates are programmatic and based simply on field observation. Repairs should be made based on a design considering all field factors. Actual cost will be subject to material and labor price fluctuations, inflation, and other market factors. It is advised that costs are estimated annually.

**PRIORITY RANKINGS**

Based on the results of the self-evaluation, the estimate costs associated with eliminating accessibility barriers within the targeted priority areas is as follows:

Right-of-Way

Each Right-of-Way element was ranked on a scale of 0-3 in terms of its relative barrier to accessibility, proximity to public facilities, type of roadway and construction feasibility. To represent the relative importance in respect to accessibility, the barrier rating is weighted by a factor of 6 and proximity is weighted by a factor of 2.

Priority 1	\$459,500
Priority 2	\$364,000
Priority 3	\$1,133,665
Priority 4	\$728,980
Total ROW Estimate:	\$2,686,145

Facilities

Each location was inspected based on the “ADA Checklist for Existing Facilities” produced by the Institute for Human Centered Design. It is advised that the City should correct the highest priority first. However, and with that in mind, some of the lower priority, lower cost corrections may be considered for earlier completion of higher priority work is already being addressed at or near the same location.

Priority 1	\$184,575
Priority 2	\$30,725
Priority 3	\$61,375
Priority 4	\$2,475
Total Facility Estimate:	\$279,150

**ENTIRE JURISDICTION**

City of LaFollette

Based on the results of the self-evaluation, the estimate costs associated with providing ADA accessibility within the entire jurisdiction is \$2,965,295. This amount signifies a significant investment that the City of LaFollette is committed to making in the upcoming years. A systematic approach to providing accessibility will be taken in order to absorb the cost into the annual budget for improvements to the City of LaFollette Facilities.

## APPENDIX C: PUBLIC OUTREACH

- Downtown Revitalization Plan Public Meeting

*Insert future outreach efforts here.*

*Insert outreach agenda's, notification, invite strategy and sign-in information.*

## APPENDIX D: GRIEVANCE PROCEDURE

As part of the ADA requirements, the City shall post the following items on an ADA website page with links for the following. The ADA page link should be located on the homepage.

- ADA Public Notice
- ADA Grievance Procedure
- ADA Complaint Form
- ADA Applicant Accommodation Request Form

Samples are inserted.



## City of LaFollette

### Americans with Disabilities Act (ADA) Public Notice

In accordance with the requirements of Title I and II of the Americans with Disabilities Act of 1990 ("ADA"), City of LaFollette will not discriminate against qualified individuals with disabilities on the basis of disability in the services, programs, or activities provided by Anderson County.

**Employment:** City of LaFollette does not discriminate on the basis of disability in its hiring or employment practices and complies with all regulations promulgated by the U.S. Equal Employment Opportunity Commission under Title I of the ADA.

**Effective Communication:** City of LaFollette will generally upon request, provide appropriate aids and services leading to effective communications for qualified persons with disabilities so they can participate equally in Anderson County Government's programs, services and activities.

**Modifications to Policies and Procedures:** City of LaFollette will make all reasonable modifications to policies or procedures to ensure that people with disabilities have an equal opportunity to enjoy all of the County's programs, services or activities.

Anyone who requires an auxiliary aid or service for effective communication, or a modification of policies or procedures to participate in a program or activity of the City of LaFollette should contact the office of the ADA coordinator as soon as possible but no later than (3) three days before the scheduled event.

The ADA does not require City of LaFollette to take action that would fundamentally alter the nature of its programs or services, or impose an undue financial or administrative burden.

Complaints that a program, service or activity of City of LaFollette is not accessible to persons with disabilities should be directed to:

ADA Coordinator  
Office of Human Resources  
207 South Tennessee Avenue  
LaFollette, TN 37766  
(423) 562-4961  
[sfoust@lafollettetn.net](mailto:sfoust@lafollettetn.net)

City of LaFollette will not place a fee or surcharge on a particular individual with disability or any group of individuals with disabilities to cover the cost of providing auxiliary aids/services or reasonable modifications of policy, such as retrieving items from locations that are open to the public but are not accessible to persons who use wheelchairs.

<b>CITY OF LAFOLLETTE LAFOLLETTE, TENNESSEE</b>	<b>EFFECTIVE DATE: December 6, 2016</b>
<b>SUBJECT: DISABILITY DISCRIMINATION POLICY AND GRIEVANCE PROCEDURES</b>	

**RESPONSIBLE OFFICE:** Human Resources Office.

**AUTHORITY:** The Americans with Disabilities Act of 1990, as amended. TCA 4-3-2303. Title I regulations regarding employment of 29 CFR Part 1630, Title II regulations regarding public entities of CFR Part 35. Department of Personnel policy concerning “Investigations of Allegations of Illegal Discrimination and Harassment”, dated August 12, 2005. If any portion of this policy conflicts with applicable state or federal laws or regulations, that portion shall be considered void. The remainder of this policy shall not be affected thereby and shall remain in full force and effect.

**PURPOSE:** The purpose of this policy is to state the Department’s EEO policy of non-discrimination based on disability.

**APPLICATION:** All persons seeking access to programs, services, or facilities of the City of LaFollette. All employees of the City of LaFollette and all persons seeking employment or conducting business with the City of LaFollette.

**DEFINITIONS:** Retaliation is defined as overt or covert acts of reprisal, interference, restraint, penalty, discrimination, intimidation, or harassment against an individual or individuals exercising rights under this policy.

**POLICY:** It is the policy of the City of LaFollette to prohibit discrimination or harassment against any qualifying individual with a disability on the basis of disability in regards to the City of LaFollette’s hiring and employment practices, or in the admission or access to, or treatment or employment in its programs, services, or activities. The City of LaFollette shall comply with applicable requirements of Section 503 and 504 of the Rehabilitation Act of 1973, the Americans with Disabilities Act, the City of LaFollette of Personnel Policies Rules and Regulations, as well as any other applicable law pertaining to disability non-discrimination.

**PROCEDURE:** The City of LaFollette hereby adopts the compliant procedure process issued by the City of LaFollette of Personnel including form PR-0411 “Intake/Referral and Investigative Memorandum process”, copy attached, which from time to time may be revised by the Department of Personnel.

**HOW TO REPORT DISABILITY DISCRIMINATION INCIDENTS**

If an employee, applicant for employment, or third party believes he/she has been subjected to conduct that violates this policy, he/she must report those incidents as soon as possible after the event occurs.

Employee and applicants for employment may file a complaint with the City of LaFollette Office of Civil Rights, Human Resources Director, the department head, their supervisor (s), or to:

ADA Coordinator  
Office of Human Resources  
207 South Tennessee Avenue  
LaFollette, TN 37766  
[sfoust@lafollettetn.net](mailto:sfoust@lafollettetn.net)  
Telephone: 423-562-4961

Under no circumstances is the individual alleging disability discrimination and/or harassment required to file a complaint with the alleged harasser. If an employee or applicant believes he/she cannot file a complaint within his/her department, that person should contact the HR Coordinator at 423-563-0719.

Individuals who wish to file a complaint are encouraged to submit the complaint in writing and to include a description of the incident(s) as well as the date(s), time(s), place(s), and any witnesses.

**HOW TO REPORT RETALIATION INCIDENTS**

If an employee, applicant for employment or third party believes he/she has been subjected to retaliation for engaging in protected conduct under this policy, he/she must report incidents as

soon as possible after the event occurs.

Any employee, applicant for employment, or third party who makes complaints of disability discrimination and/or harassment or provides information related to such complaints will be protected against retaliation. If retaliation occurs, the employee, applicant for employment, or third party should report the retaliation in the same manner as he/she would report a workplace harassment complaint.

**HOW COMPLAINTS ARE INVESTIGATED AND RESOLVED**

The ADA Coordinator in the Office of Human Resources will conduct a thorough and neutral investigation of all reported complaints of workplace disability discrimination, harassment and/or retaliation as soon as practicable. Generally, an investigation will include an interview with the complainant to determine if the conduct in issue violates this policy. If the department determines that the conduct falls within the terms of this policy, the department will interview the alleged offender and any other witnesses who have direct knowledge of the circumstances of the allegations.

The City of LaFollette retains the sole discretion to determine whether a violation of this policy has occurred and to determine what level, if any, or disciplinary action is warranted.

If a complaint involves a city administrator, city council member, or the city mayor the HR Coordinator will investigate the complaint on behalf of the City of LaFollette and report the results to the appropriate agency or authority.

### **HOW CONFIDENTIALITY IS TREATED**

To the extent permitted by law, the City of LaFollette will try to maintain the confidentiality of each party involved in disability discrimination and/or harassment investigation, complaint or charge, provided it does not interfere with the department's ability to investigate the allegations or to take corrective action. However, the City of LaFollette cannot guarantee confidentiality. Any documents that are made or received in the course of the investigation are public records under the State's Public Act, unless otherwise exempted by state law. Unless such exemption applies, state law will prevent the state from maintaining confidentiality or investigative records.

### **DIRECTIVE TO SUPERVISORY PERSONNEL**

Supervisory personnel who receive a complaint alleging disability discrimination or learn by any means of conduct that may violate this policy must immediately report any such event to the department's Human Resources Director, ADA Coordinator, or to the Office of the City of LaFollette.

### **CORRECTIVE ACTION FOR VIOLATION OF THIS POLICY**

Any employee who engages in conduct that violates this policy or who encourages such conduct by others will be subject to corrective action. Such corrective action includes, but not limited to, mandatory participation in counseling, training, disciplinary action, up to and including termination, and/or changes in job duties or location.

Supervisory personnel who allow disability discrimination, harassment and/or retaliation to continue or fail to take appropriate action upon learning of such conduct will be subject to corrective action. Such corrective action includes, but is not limited to, mandatory participation in counseling, training, disciplinary action, up to and including termination, and/or changes in job duties or location.

### **OTHER PROVISIONS**

When a complaint is filed, the investigator will inform the complainant, accused and witnesses of the statement of limitation on confidentiality included in the Intake/Referral process. The investigator will also inform the complainant, accused, and witnesses of the strict prohibition of retaliation, as defined in this policy.

The investigator will communicate information concerning the allegations only to those to whom the investigator is authorized to report such matters.

The investigator will issue a letter to the accuser and the accused concerning the outcome of the investigation. A copy of this letter will be forwarded to the office of the Mayor and Council, City of LaFollette.

All documents generated by the investigation and any subsequent disciplinary action shall be preserved and only disposed of in accordance with the appropriate City of LaFollette rule.



Any disciplinary action taken requires that records of such action be maintained in the disciplined employee's personnel file subject to the City of LaFollette of Personnel's rules concerning the retention of disciplinary records.

The supervisor is responsible for maintaining the proper performance level, conduct and discipline of employees under his/her supervision. When corrective action is necessary resulting from violation of policy, the supervisor must take the appropriate disciplinary action.

INTAKE/REFERRAL FORM

STATEMENT CONCERNING CONFIDENTIALITY

PURSUANT TO TENNESSEE CODE ANNOTATED § 10-7-502(a), "all state... records... shall at all times, during business hours, be open for personal inspection by any citizen of Tennessee, and those in charge of such records shall not refuse such right of inspection to any citizen, unless otherwise provided by state law." Accordingly, the State cannot and does not guarantee the confidentiality of this document or any notes, files, reports, or other documents, whether created by the State or received from the complainant, accused, or witnesses.

NAME OF COMPLAINANT OR PERSON REPORTING EVENT:

\_\_\_\_\_

TELEPHONE NUMBERS OF COMPLAINANT OR PERSON REPORTING EVENT:

WORK: \_\_\_\_\_

HOME: \_\_\_\_\_

IS YOUR HOME TELEPHONE NUMBER UNLISTED? YES \_\_\_\_\_ NO \_\_\_\_\_

MOBILE: \_\_\_\_\_

NAME OF AGENCY AND DIVISION INVOLVED:

\_\_\_\_\_

NAME OF PERSON(S) WHO ALLEGEDLY DISCRIMINATED AGAINST YOU OR HARASSED YOU?

\_\_\_\_\_

\_\_\_\_\_

RELATIONSHIP OF ALLEGED ACCUSER TO YOU (I.E. DIRECT SUPERVISOR, CO-WORKER):

-----



---

---

---

WERE THERE OTHER EMPLOYEES WHO WERE TREATED BETTER IN SIMILAR CIRCUMSTANCES? PLEASE CHECK ONE:            YES \_\_\_\_\_            NO \_\_\_\_\_

IF YOU ANSWERED YES TO THE PREVIOUS QUESTION, PLEASE PROVIDE THE NAMES OF THE EMPLOYEES WHO WERE TREATED BETTER AND DESCRIBE HOW THEY WERE TREATED BETTER:

---

---

---

---

---

---

PLEASE LIST BELOW ANY PERSONS (WITNESSES, FELLOW EMPLOYEES, SUPERVISORS, OTHERS) WHO MAY HAVE ADDITIONAL INFORMATION TO SUPPORT OR CLARIFY THIS COMPLAINT. EXPLAIN WHAT INFORMATION EACH CAN PROVIDE.

---

---

---

---

---

WHAT EXPLANATION DO YOU THINK THE AGENCY OR ACCUSED WILL GIVE AS TO WHY YOU WERE TREATED IN THIS MANNER?

---

---

---

---

---

PLEASE IDENTIFY ANY OTHER INFORMATION (INCLUDING DOCUMENTARY EVIDENCE SUCH AS DIARIES, JOURNALS, RECORDINGS, EMAILS, VOICEMAIL, CORRESPONDENCE, ETC.) THAT YOU THINK IS RELEVANT TO THIS MATTER.

---

---

---

---

EFFECTIVE DATE: December 6, 2016

WHAT DO YOU WANT TO HAPPEN AS A RESULT OF THIS COMPLAINT?

\_\_\_\_\_  
\_\_\_\_\_  
\_\_\_\_\_

IF YOU HAVE TOLD ANYONE ELSE ABOUT THIS MATTER, PLEASE LIST THE NAME(S) AND RELATIONSHIP(S) (CO-WORKER, FAMILY MEMBER, ETC.)

\_\_\_\_\_  
\_\_\_\_\_  
\_\_\_\_\_

SIGNATURE OF COMPLAINT: \_\_\_\_\_

DATE: \_\_\_\_\_

IF COMPLETED BY SUPERVISOR OR AGENT OF STATE AS A RESULT OF INTERVIEWING A COMPLAINANT, PLEASE PROVIDE THE FOLLOWING INFORMATION:

PRINTED NAME: \_\_\_\_\_

SIGNATURE: \_\_\_\_\_

TITLE: \_\_\_\_\_

AGENCY AND/OR DIVISION: \_\_\_\_\_

WORK TELEPHONE NUMBER: \_\_\_\_\_

DATE COMPLAINT RECEIVED: \_\_\_\_\_

DATE FORM COMPLETED: \_\_\_\_\_

REASON FOR DELAY, IF ANY, BETWEEN THE DATE THE COMPLAINT WAS RECEIVED AND THE DATE THE FORM WAS COMPLETED:

\_\_\_\_\_  
\_\_\_\_\_  
\_\_\_\_\_

**EFFECTIVE DATE: December 6, 2016**

**NAME AND TITLE OF PERSON TO WHOM THE FORM WAS FORWARDED FOR ACTION:**

---

---

---

**DATE ON WHICH THE FORM WAS FORWARDED:**

---

## **INVESTIGATION MEMORANDUM FORMAT**

- 1. COMPLAINANT'S name, job title, agency, location**
- 2. Initiation of investigation:**
  - a. Persons involved in conducting investigation
  - b. Date complaint received by agency
  - c. Person in agency who initially received complaint
  - d. Date investigation began and, if applicable, reason for any day
- 3. Description of complaint**
  - a. General nature of events giving rise to complaint, including dates of alleged events
  - b. Person(s) accused of inappropriate behavior and organizational relationship to complainant
- 4. Statements and evidence gathered in the investigation**
  - a. Complainant
    - i. Specific allegations(s). If more than one allegation, list each separately
    - ii. Additional witnesses named by complainant
    - iii. Resolution desired by complainant
  - b. Person accused of inappropriate behavior. If more than one, list each separately
    - i. Specific response(s) to allegation(s). If more than one, list each separately
    - ii. Additional witnesses named by accused
  - c. Witnesses interviewed
    - i. Name and job title. If more than one, list each separately
    - ii. Evidence about specific allegations (noting firsthand knowledge v. secondhand knowledge)
    - iii. Additional witnesses, if any
- 5. Summary of evidence**
  - a. Corroboration of specific allegations
  - b. Non-corroboration of specific allegations
  - c. Other pertinent information
- 6. Conclusions concerning violation of policy. INCLUDE ONLY AT THE DIRECTION OF THE AGENCY.**
- 7. Appendices**
  - a. List of potential witnesses not interviewed and reason
  - b. List of attachments (documentary evidence)

# City of LaFollette

## Americans with Disabilities Act (ADA) Complaint Form

This form is intended to be a tool to help you describe the act or situation encountered that you believe to be discriminatory. This form also serves as a basis for which a solution can be found. If you have questions about this form or need assistance completing the form, please contact the ADA Coordinator at (423) 563-0719.

You will be contacted for further information, or you will receive a response within fifteen (15) days of receipt of this complaint by the appropriate City staff.

**Please fill out this form in its entirety-do not use pencil. When finished, sign and date the form and return to the address on the form. There are three sections of the form-please complete each section as applicable or enter 'not applicable'.**

### A. Person alleged to have encountered a problem

Name: \_\_\_\_\_

Address: \_\_\_\_\_

Phone-Home: \_\_\_\_\_

Phone- Business: \_\_\_\_\_

Email address: \_\_\_\_\_

Nature of disability: \_\_\_\_\_

### B. Person filing the complaint (if different from above)

Name: \_\_\_\_\_

Address: \_\_\_\_\_

Phone-Home: \_\_\_\_\_

Phone- Business: \_\_\_\_\_

Email address: \_\_\_\_\_



**C. The Situation**

In your own words, please explain how you believe you were treated less favorably. (Use second page if necessary.)

---

---

---

---

---

---

---

Date of Occurrence: \_\_\_\_\_

Please list name(s) and contact information of any witnesses:

Name/Number/Email

What remedy was sought prior to completing this form?

Of whom was a remedy sought? What was the outcome?

Please describe the relief or accommodation being sought. I affirm that the above information is true and correct.

Signature: \_\_\_\_\_

Date: \_\_\_\_\_

Send this form to:

ADA Coordinator  
City of LaFollette Human Resources Department  
207 South Tennessee Avenue  
LaFollette, TN 37766

In Office Use Only:

Date received: \_\_\_\_\_ Received by: \_\_\_\_\_

Action taken: \_\_\_\_\_

Transferred to: \_\_\_\_\_

Action taken: \_\_\_\_\_

City of LaFollette  
APPLICANT ACCOMMODATION REQUEST

Please type or print information and return to the ADA Coordinator 's office. Information contained on this form is classified as CONFIDENTIAL to the extent permitted by law. Information obtained or generated in the processing of this Accommodation Request may be released to individuals or agencies participating in the evaluation or provision of this accommodation. Please complete and note that this accommodation request cannot be processed unless the requested position description and medical documentation are attached. For more information contact City of LaFollette ADACoordinator at 423-562-4961.

Full Name: \_\_\_\_\_

PO Box or Street: \_\_\_\_\_

City/State/Zip Code: \_\_\_\_\_

What is the position for which you are applying? \_\_\_\_\_

Describe the portion(s) of the employment test or the position for which you are requesting an accommodation. Please be specific.

\_\_\_\_\_

Describe any accommodations you believe would be of benefit in this portion of the testing process, on the job, or accommodations successfully used in the past:

\_\_\_\_\_

Describe the nature of your disability:

\_\_\_\_\_

How does this disability prevent you from performing the employment testing function or essential job function listed in #1?

\_\_\_\_\_

\_\_\_\_\_  
APPLICANT SIGNATURE

\_\_\_\_\_  
DATE SUBMITTED

**APPENDIX E: CONTACT INFORMATION**

**CITY OF LAFOLLETTE ADA COORDINATOR**

Name: Stan Foust  
Address: City of LaFollette  
207 South Tennessee Avenue  
LaFollette, TN 37766  
Phone: (423) 562-4961  
E-mail: sfoust@lafollettetn.net

## APPENDIX F: AGENCY ADA DESIGN STANDARDS AND PROCEDURES

### Design Procedures

A vital component of an effective ADA program is to ensure that newly constructed infrastructure is compliant with ADA standards. Typically, there are a number of existing non-complaint ADA concerns facing local governments. Well established and documented construction standards is a necessity. Without established and monitored construction practices, the odds the agency accepting non-complaint construction is greatly increased. When this happens, the agencies' compliance burden is greatedened.

Below are a few concepts that should be considered with revisions to existing design standards. Additionally, TDOT standard drawings is a quick way to aide in the establishment of development standards. Example standard drawings are attached in this appendix.

#### Intersection Corners

Curb ramps or blended transitions will attempt to be constructed or upgraded to achieve compliance within all capital improvement projects. There may be limitations which make it technically infeasible for an intersection corner to achieve full accessibility within the scope of any project. Those limitations will be noted and those intersection corners will remain on the transition plan. As future projects or opportunities arise, those intersection corners shall continue to be incorporated into future work. Regardless if full compliance can be achieved or not, each intersection corner shall be made as compliant as possible in accordance with the judgment of City staff.

#### Sidewalks / Trails

Sidewalks and trails will attempt to be constructed or upgraded to achieve compliance within all capital improvement projects. There may be limitations which make it technically infeasible for segments of sidewalks or trails to achieve full accessibility within the scope of any project. Those limitations will be noted and those segments will remain on the transition plan. As future projects or opportunities arise, those segments shall continue to be incorporated into future work. Regardless if full compliance can be achieved or not, every sidewalk or trail shall be made as compliant as possible in accordance with the judgment of City staff.

#### Traffic Control Signals

Traffic control signals will attempt to be constructed or upgraded to achieve compliance within all capital improvement projects. There may be limitations which make it technically infeasible for individual traffic control signal locations to achieve full accessibility within the scope of any project. Those limitations will be noted and those locations will remain on the transition plan. As future projects or opportunities arise, those locations shall continue to be incorporated into future work. Regardless if full compliance can be achieved or not, each traffic signal control location shall be made as compliant as possible in accordance with the judgment of City staff.

#### Other policies, practices and programs

Policies, practices and programs not identified in this document will follow the applicable ADA standards.

## Design Standards

The City of LaFollette utilizes PROWAG, as adopted by the Tennessee Department of Transportation (TDOT), as its design standard. A copy of this document is included in the following pages of this appendix.

## APPENDIX G: DISABILITY AND IMPAIRMENT CONCEPTS & DEFINITIONS

The following are several key concepts that make up the definition of disabilities and impairments according to the ADA. It is intended for general application and is not exhaustive. For a full listing of definitions, concepts and examples please refer to the complete text of the Americans with Disabilities Act.

### Who is protected?

An individual with a disability is a person who:

Has a physical or mental impairment that substantially limits one or more major life activities;  
 Has a record of such an impairment; or  
 Is regarded as having such an impairment.

The ADA measures an impairment as when the condition is most severe. If you are only sometimes impaired, the ADA will look at when your symptoms show the most.

There are two essential parts to having a disability:

You must have a physical or mental impairment; and  
 The impairment must substantially keep you from doing major life activities.

### Where is protection mandated?

The Americans with Disabilities Act (ADA) protects people with disabilities from discrimination. Those areas with protection are:

- State and local government services
- Places of public accommodation
- Employment
- Telecommunications
- Transportation

The ADA covers employers with 15 or more employees, including state and local governments.

### How are people protected?

If the individuals' disabilities prevent them from performing the essential functions of the program or activity, it is necessary to determine whether reasonable program modifications would enable these individuals to perform the essential functions of the program or activity.

A reasonable program modification is any change in program or activity or in the way things are customarily done that enables an individual with a disability to enjoy equal program opportunities. Adjustments may include altering activity registrations, modifying program environment or, for known disabilities, potentially modifying facilities.

**What are disabilities according to the ADA?**

To have a disability under the ADA, you must have a qualified physical or mental impairment. Not everything that keeps you from doing activities is an impairment covered by the ADA. The ADA uses a broad definition of disability.

Some examples of physical or mental impairments covered by the ADA:

- AIDS, and its symptoms
- Alcoholism
- Asthma
- Blindness or other visual impairments
- Cancer
- Cerebral palsy
- Depression
- Diabetes
- Epilepsy
- Hearing or speech impairments
- Heart Disease
- Migraine Headaches
- Multiple sclerosis
- Muscular dystrophy
- Orthopedic impairments
- Paralysis
- Pregnancy with complications
- Thyroid gland disorders
- Tuberculosis
- Loss of body parts

Some temporary, short-term impairments with little or no lasting effects are not qualified. The ADA does not protect against discrimination based on different lifestyles. Being addicted to drugs is not a disability. This applies to unlawful drugs like cocaine and to the abuse of prescription drugs.

Examples of conditions that are **not** considered impairments:

- Short-term or seasonal viral and bacterial infections
- Muscular or skeletal injuries that are expected to heal completely
- Addictive or compulsive behaviors
- Pregnancy without complications
- Lack of good decision-making skills
- Cultural factors such as education, socio-economic status, age, or sexual preferences.



## APPENDIX H: GLOSSARY OF TERMS

This appendix is to serve a brief glossary of commonly used Americans with Disabilities Act (ADA) terms. For additional terms, see <https://adata.org/glossary-terms#A>

**ABA:** See Architectural Barriers Act.

**ADA:** See Americans with Disabilities Act.

**ADA Transition Plan:** A governmental agency's plan that identifies accessibility needs, the process to fully integrate accessibility, and ensures all facilities, services, programs, and activities are accessible to all individuals.

**ADAAG:** See Americans with Disabilities Act Accessibility Guidelines.

**Accessible:** A facility that provides access to people with disabilities using the design requirements of the ADA.

**Accessible Pedestrian Signal (APS):** A device that communicates information about the WALK phase in audible and vibrotactile formats.

**Alteration:** A change to a facility in the public right-of-way that affects or could affect access, circulation, or use. An alteration must not decrease or have the effect of decreasing the accessibility of a facility or an accessible connection to an adjacent building or site.

**Americans with Disabilities Act (ADA):** The Americans with Disabilities Act; Civil rights legislation passed in 1990 and effective July 1992. The ADA sets design guidelines for accessibility to public facilities, including sidewalks and trails, by individuals with disabilities.

**Americans with Disabilities Act Accessibility Guidelines (ADAAG):** contains scoping and technical requirements for accessibility to buildings and public facilities by individuals with disabilities under the Americans with Disabilities Act (ADA) of 1990.

**APS:** See Accessible Pedestrian Signal.

**Architectural Barriers Act (ABA):** Federal law that requires facilities designed, built, altered or leased with Federal funds to be accessible. The Architectural Barriers Act marks one of the first efforts to ensure access to the built environment.

**Capital Improvement Program (CIP):** The CIP for the Transportation Department includes an annual capital budget and a five-year plan for funding the new construction and reconstruction projects on the City's transportation system.

**Disability** – A physical or mental impairment that substantially limits one or more major life activities, a record of such an impairment, or being regarded as having such an impairment.

**Detectable Warning:** A surface feature of truncated domes, built in or applied to the walking surface to indicate an upcoming change from pedestrian to vehicular way.

**DOJ:** See United States Department of Justice

**Federal Highway Administration (FHWA):** A branch of the US Department of Transportation that administers the federal-aid Highway Program, providing financial assistance to states to construct and improve highways, urban and rural roads, and bridges.

**Major Life Activities:** Major life activities include the operation of any major bodily function. For example, things that affect the immune system, bowels, bladder, digestive, endocrine, reproductive functions, etc. Basic daily functions also count such as: eating, sleeping, standing, walking, speaking, bathing, dressing, shaving, preparing a meal, etc. It also includes problems with learning, reading, thinking, interacting, and working.

**Pedestrian Access Route (PAR):** A continuous and unobstructed walkway within a pedestrian circulation path that provides accessibility.

**Pedestrian Circulation Route (PCR):** A prepared exterior or interior way of passage provided for pedestrian travel.

**PROWAG:** An acronym for *Public Rights-of-Way Accessibility Guidelines* issued in 2005 by the U. S. Access Board. This guidance addresses roadway design practices, slope, and terrain related to pedestrian access to walkways and streets, including crosswalks, curb ramps, street furnishings, pedestrian signals, parking, and other components of public rights-of-way.

**Qualified individual with a disability** – A person with a disability who satisfies the requisite skill, experience, education and other job-related requirements of the employment position such individual holds or desires, and who, with or without reasonable accommodation, can perform the essential functions of such position.

**Reasonable accommodation** – A modification or adjustment to a job, the work environment, or the way things usually are done that enables a qualified individual with a disability to enjoy an equal employment opportunity. For example:

- Modifications or adjustments to a job application process that enable a qualified applicant with a disability to be considered for the position such qualified applicant desires; or
- Modifications or adjustments to the work environment, or to the manner or circumstances under which the position held or desired is customarily performed, that enable a qualified individual with a disability to perform the essential functions of that position; or
- Modifications or adjustments that enable a covered entity's employee with a disability to enjoy equal benefits and privileges of employment as are enjoyed by its other similarly situated employees without disabilities.

**Right of Way:** A general term denoting land, property, or interest therein, usually in a strip, acquired for the network of streets, sidewalks, and trails creating public pedestrian access within a public entity's jurisdictional limits.

**Section 504:** The section of the Rehabilitation Act that prohibits discrimination by any program or activity conducted by the federal government.

**Uniform Accessibility Standards (UFAS):** Accessibility standards that all federal agencies are required to meet; includes scoping and technical specifications.

**United States Access Board:** An independent federal agency that develops and maintains design criteria for buildings and other improvements, transit vehicles, telecommunications equipment, and electronic and information technology. It also enforces accessibility standards that cover federally funded facilities.

**United States Department of Justice (DOJ):** The United States Department of Justice (often referred to as the Justice Department or DOJ), is the United States federal executive department responsible for the enforcement of the law and administration of justice.